

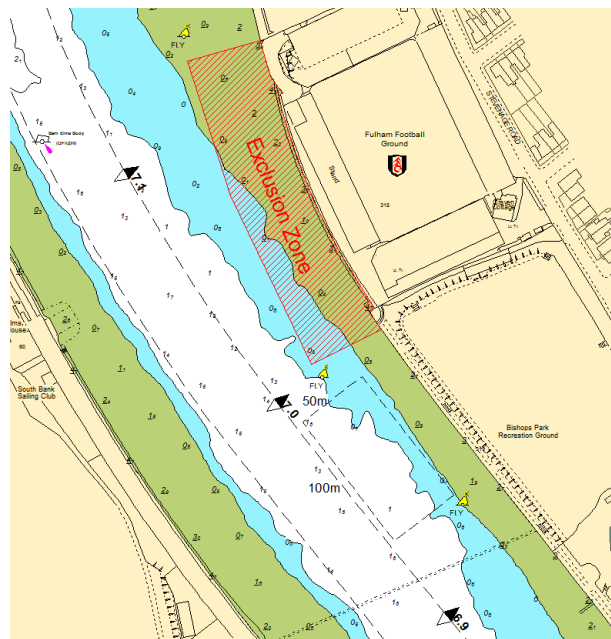
## NOTICE TO MARINERS U18 of 2020

### BARN ELMS REACH FULHAM FOOTBALL CLUB WORKS TEMPORARY BARGE MOORING

*This Notice to Mariners supersedes U16 of 2020 and is supplementary to U13 of 2019.*

On the week commencing Monday 19<sup>th</sup> October 2020 until late February 2021 marine contactors working on behalf of Fulham Football Club will be delivering various barges to Barn Elms Reach for the construction works taking place at Fulham Football Club. These barges will be temporarily moored downriver and outside of the exclusion zone in the mooring box as detailed in the chart extract below, for approximately one tidal cycle on each occasion.

The Guard Boat KORAT will be in attendance to warn river users of these barges until such a time as they have been moved into the exclusion zone.



The barge delivery will be undertaken during weekday's and the scheduled movements will be promulgated by Buckingham Group Contracting Ltd via their social media channel on Twitter: [@FulhamFCWorks](https://twitter.com/FulhamFCWorks).

All vessels associated with the works will maintain a listening watch on VHF Channel 14. As required, RY flags will be exhibited in conjunction with "proceed with caution / slow down requests" in VTS broadcasts.

Vessels are to be mindful of the works and navigate with due regard.

**2 November  
2020**

Port of London Authority  
London River House, Royal Pier Road,  
Gravesend, Kent DA12 2BG

**Darren Knight**  
Deputy Harbour Master



TO RECEIVE FUTURE NOTICES TO MARINERS BY **E-MAIL**,  
PLEASE REGISTER VIA OUR WEBSITE [www.pla.co.uk](http://www.pla.co.uk)  
Telephone calls, VHF radio traffic, CCTV and radar traffic images may  
be recorded in the VTS Centres at Gravesend and Woolwich  
All Current Notices to Mariners can be found here -  
<http://www.pla.co.uk/Safety/Regulations-and-Guidance/Notices-to-Mariners/Notices-to-Mariners>

