



## **Tidal Thames Environment Conference**

**Welcome**



## **Tidal Thames Environment Conference**

Robin Mortimer

Chief Executive



## **An introduction to the PLA**

James Trimmer

Director of Planning & Environment

# Custodians of the Tidal Thames

---

- Manage, Regulate and Licence Activities Across 150 km



# Activity on the Tidal River Thames

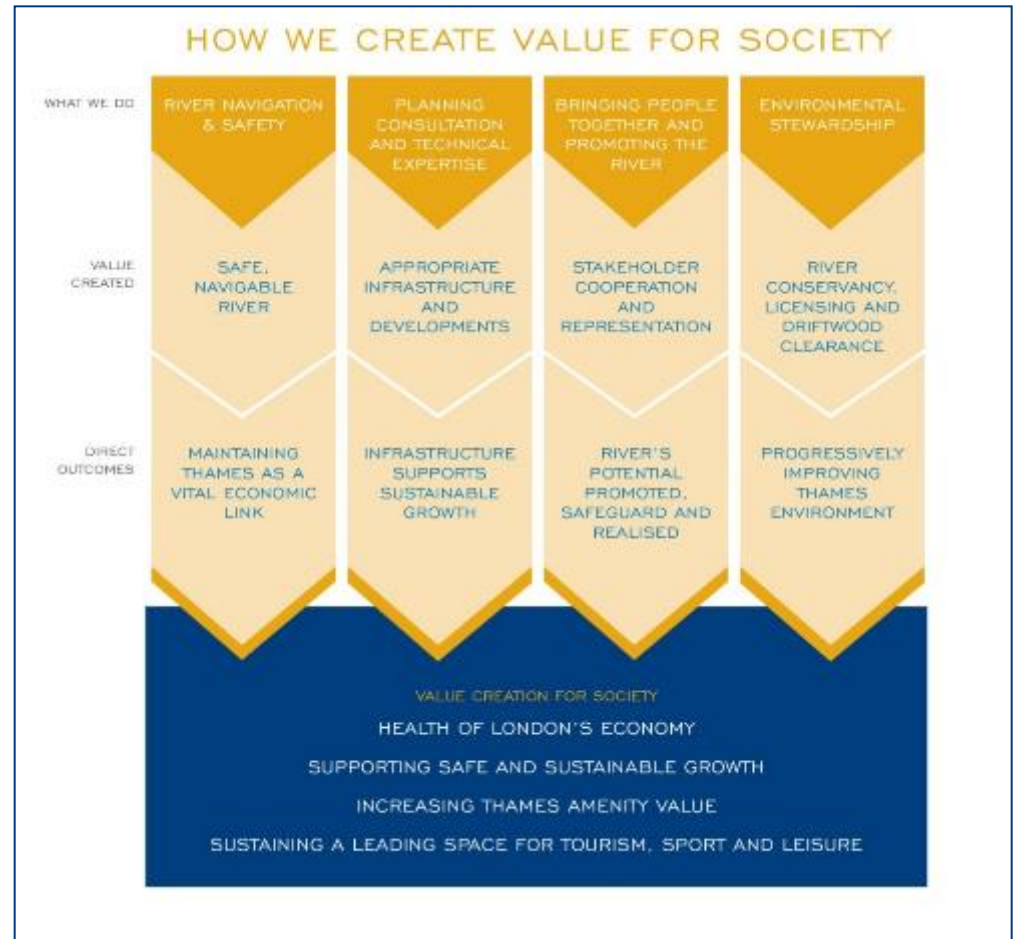
---

- Wide Variety of Uses from Landward to Seaward Limits



# Stakeholder Value

- Navigation and Safety
- Sustainable Growth
- Partnerships
- Stewardship



# A Thriving Port

---

- 2016 - 50mt
- 2035 - 60 to 80mt target
- 43,500 FTE jobs
- £4bn GVA



# Passenger Transport

---

- 2015/16 – 10.3 million passenger trips
- 2020 -12 million trip target
- 2035 - 20 million trip target
- Working with developers and planners





# Inland Freight

---

- Lorries off London's roads
  - 2015 - 2.4mt (exc. Major Projects)
  - 2035 – 4.0mt (exc. Major Projects)
- Major Projects -
  - Lea Tunnel
  - Crossrail
  - Northern Line Extension
  - Thames Tideway Tunnel
  - Counters Creek



# A Thriving Environment

---

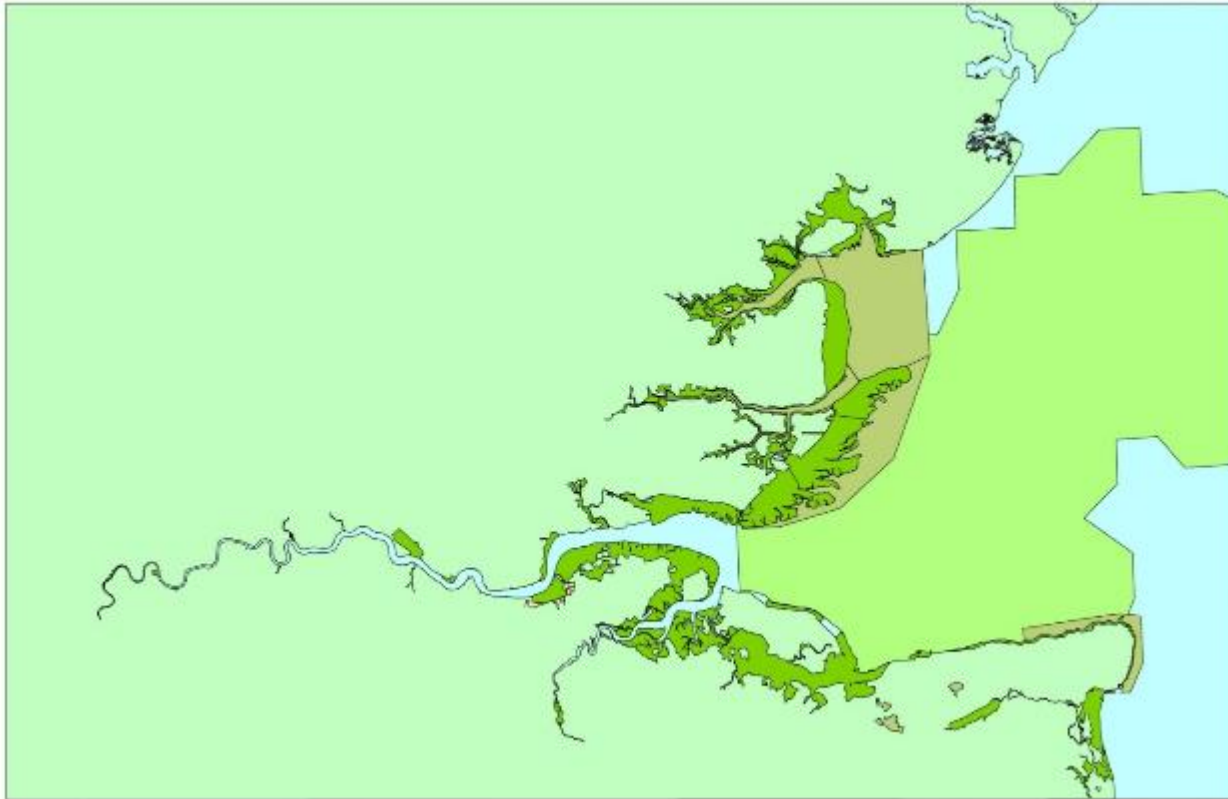
- 300,000 overwintering birds
- 125 fish species
- Over 900 seals



# Protected areas

---

- 91.6% Statutory Designations



# Managing the Balance

---

- A duty to Manage and Protect the Environment
- Regulatory Consideration
- Full Consideration of PLA Activities and Impacts
- Environmental Management System



**Thank You**

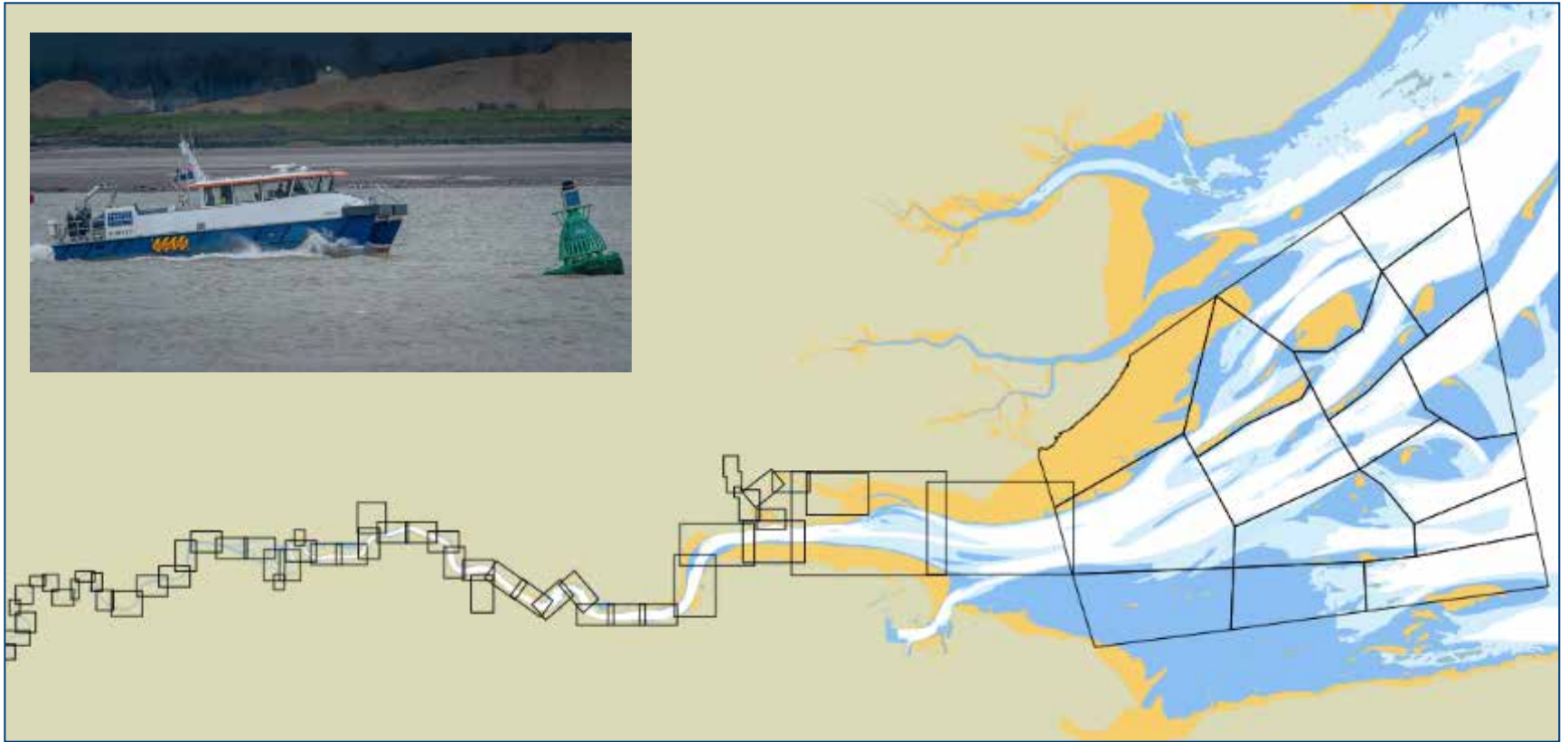


## **Sediment Transport**

Alex Mortley

Conservancy Manager

# Survey Areas

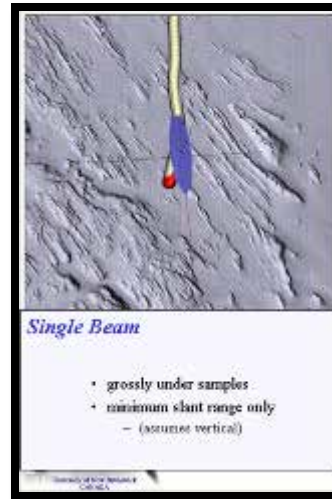
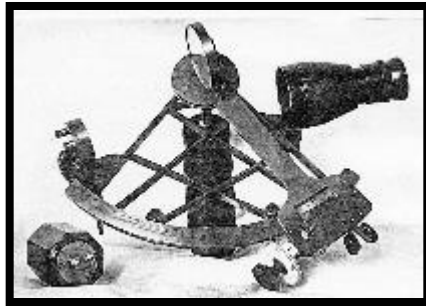


- 70 Survey/Chart Areas = ~ 400 sq. M
- Decadal Surveys
- Staggered

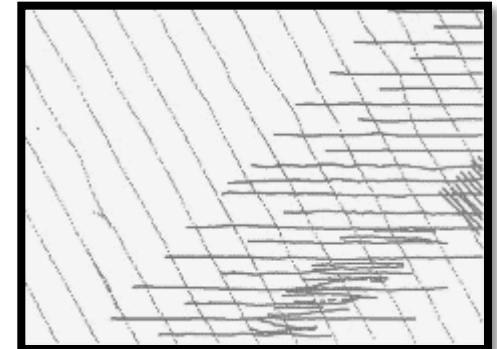
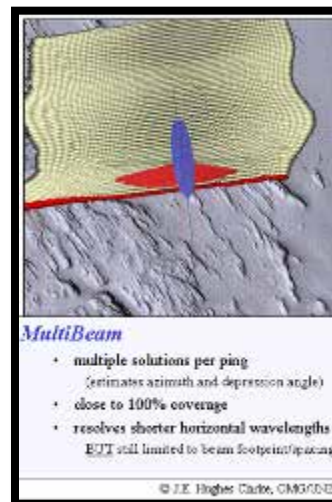


# Evolution of Survey Technology

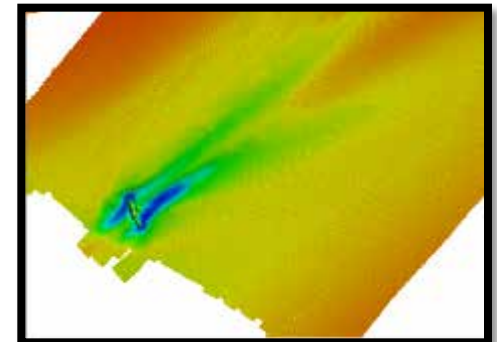
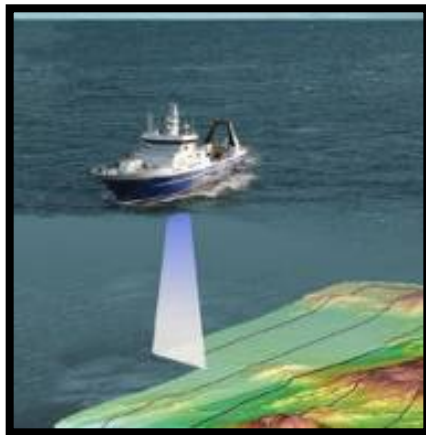
1970's – 1995  
Analogue



1995 – 2005  
Digital

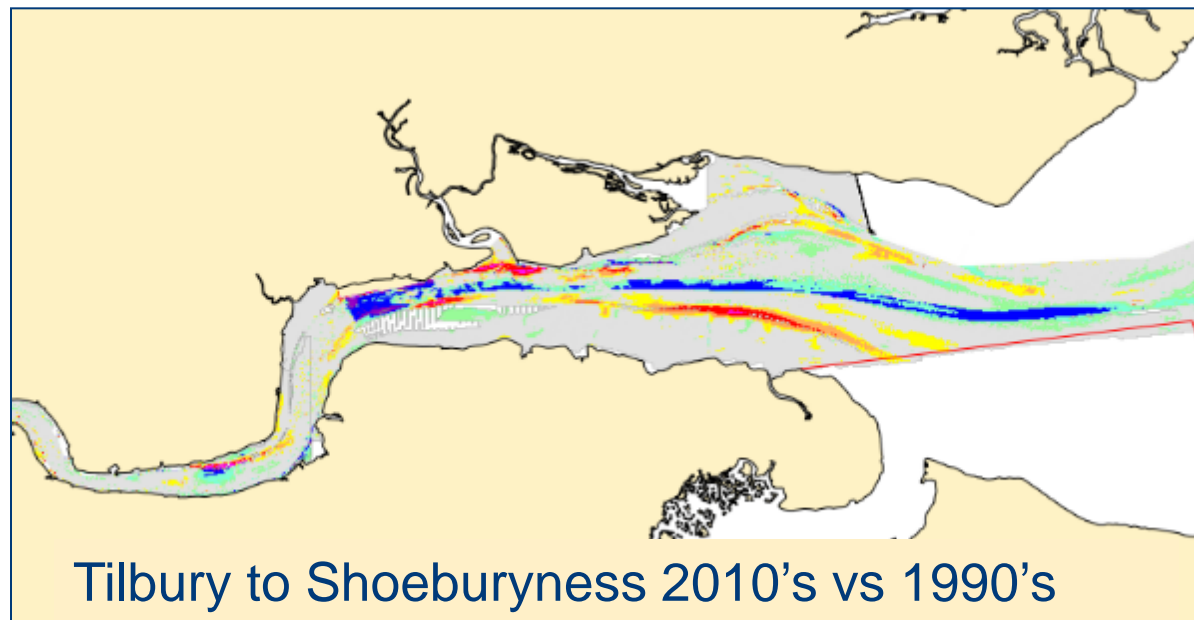
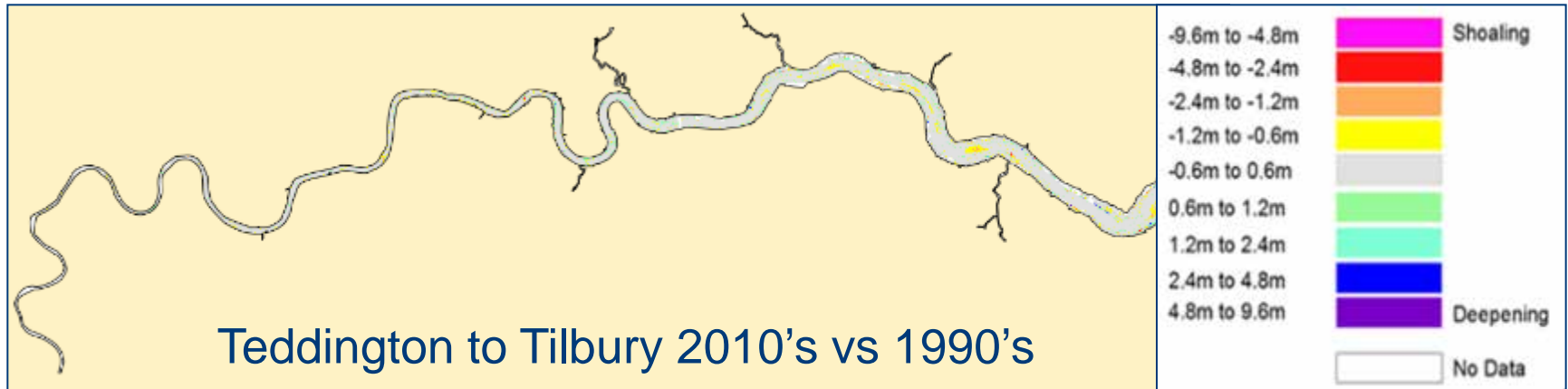


2005 – 2015  
Digital



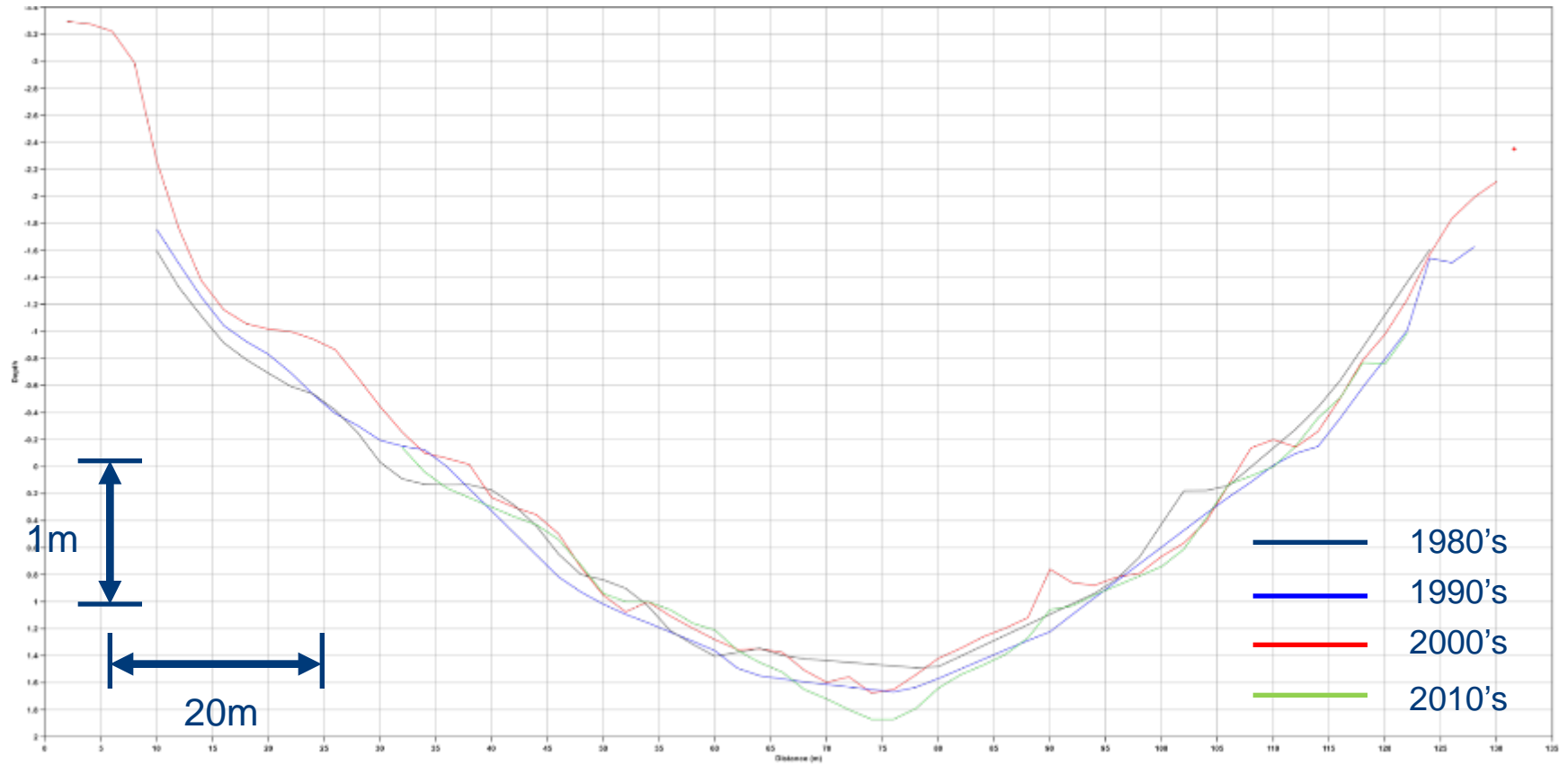


# River Observations – Bed Differences



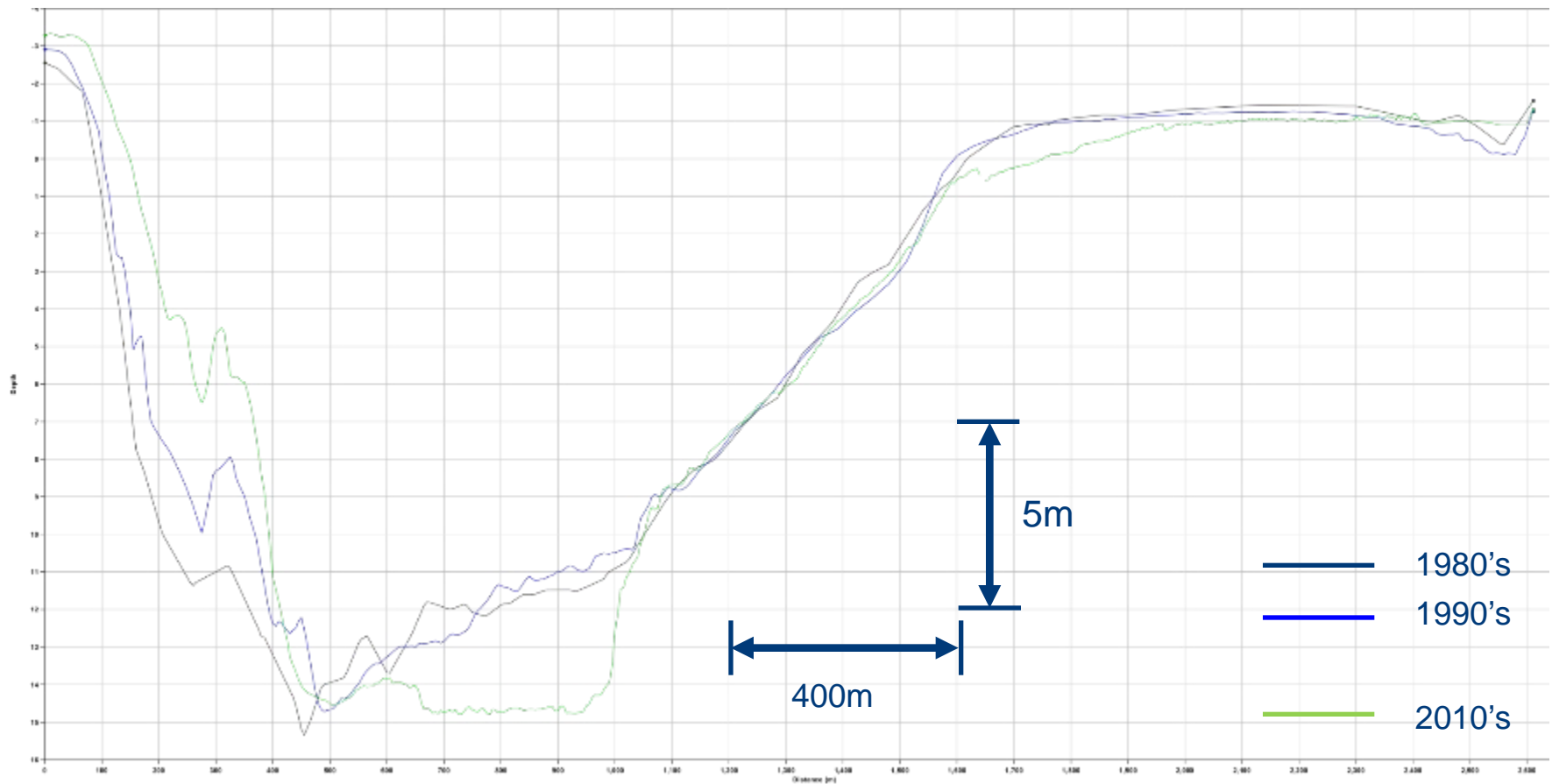
# River Observations – Cross Section (1)

Kew

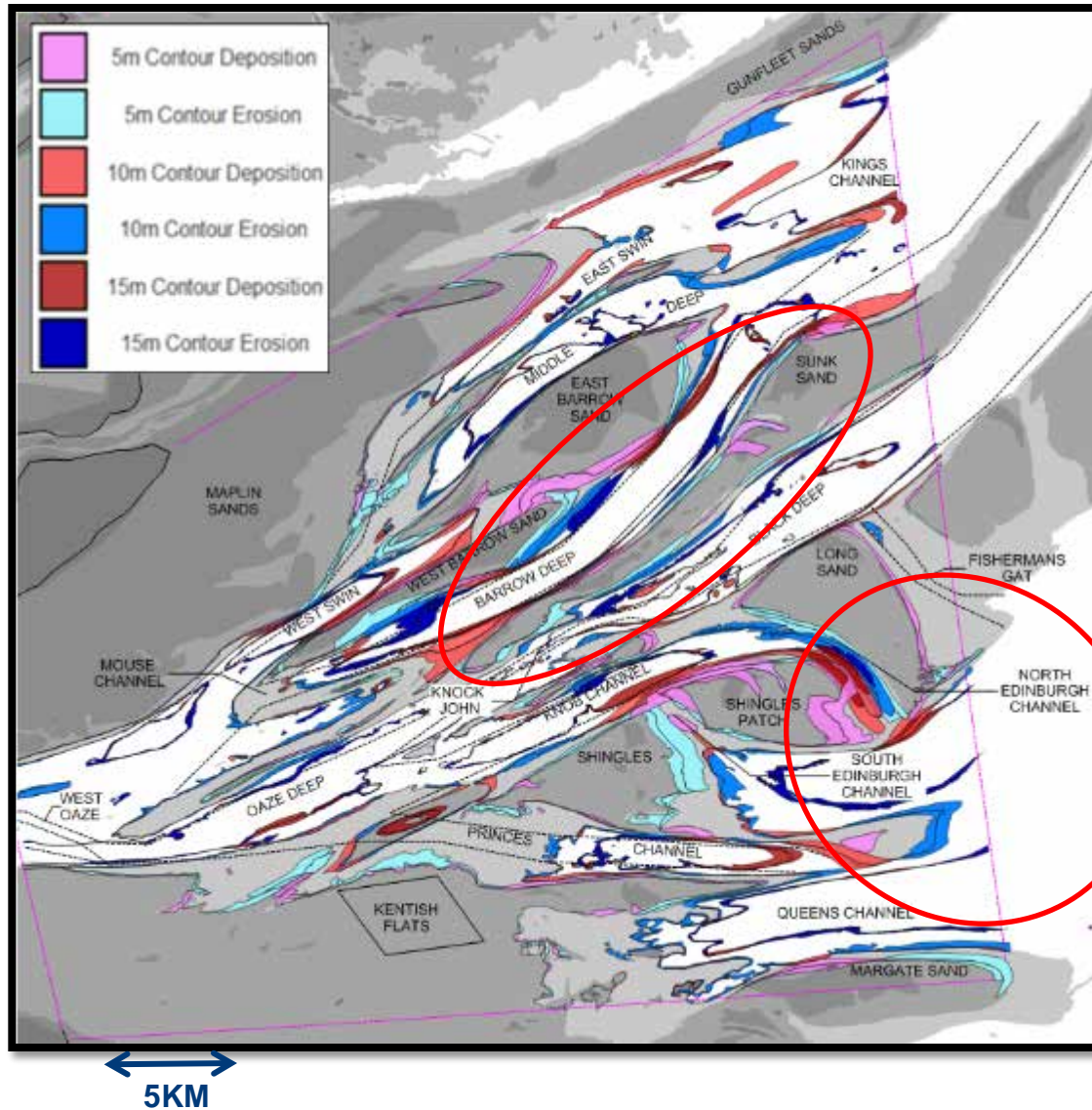


# River Observations – Cross Section (2)

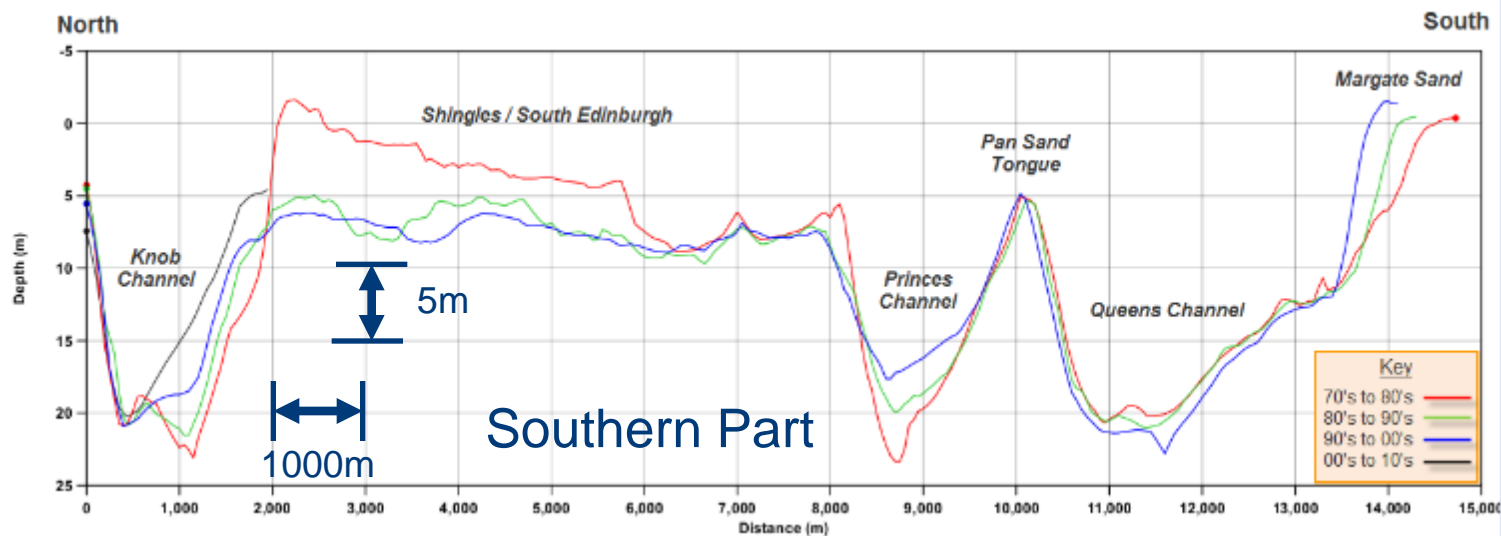
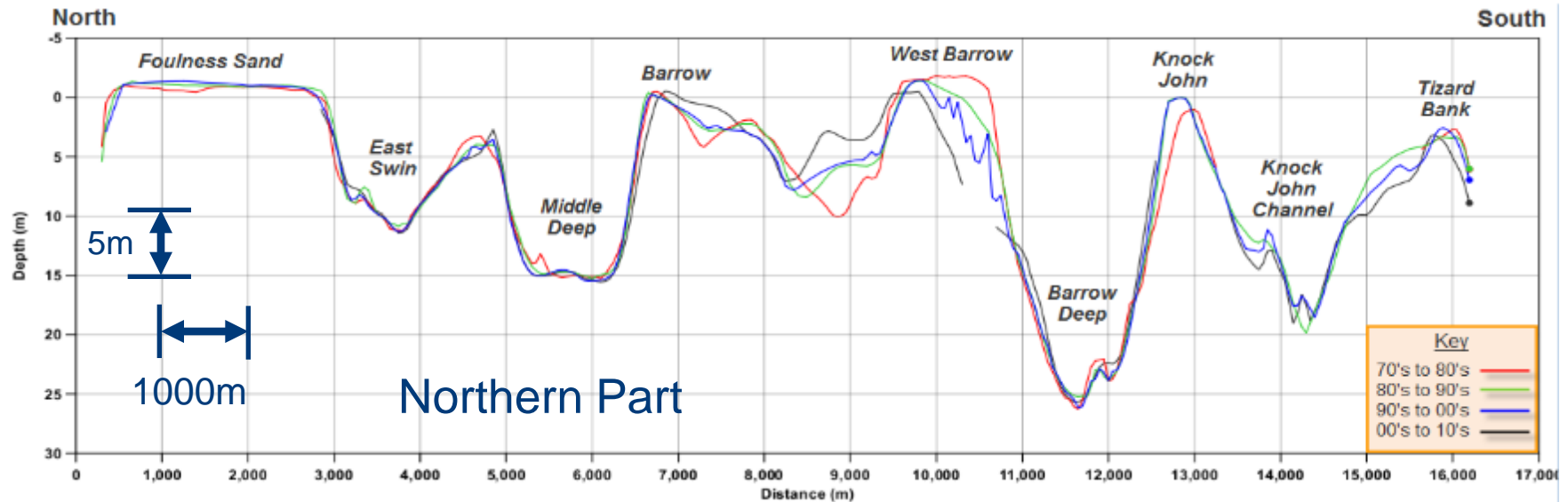
## Holehaven



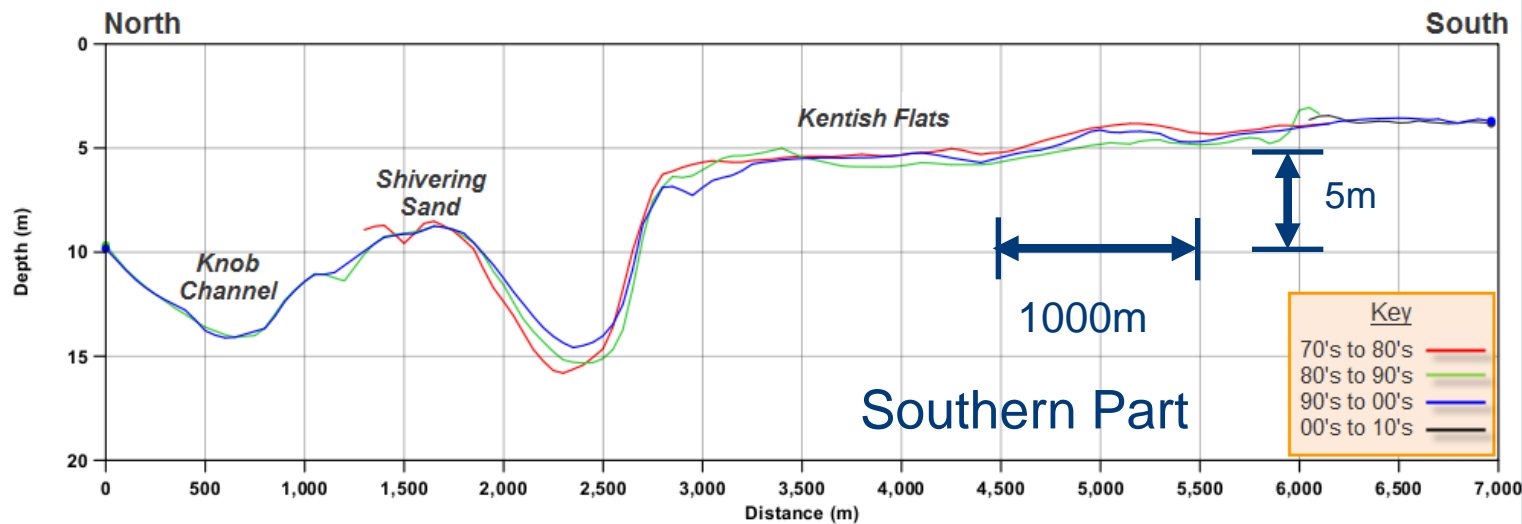
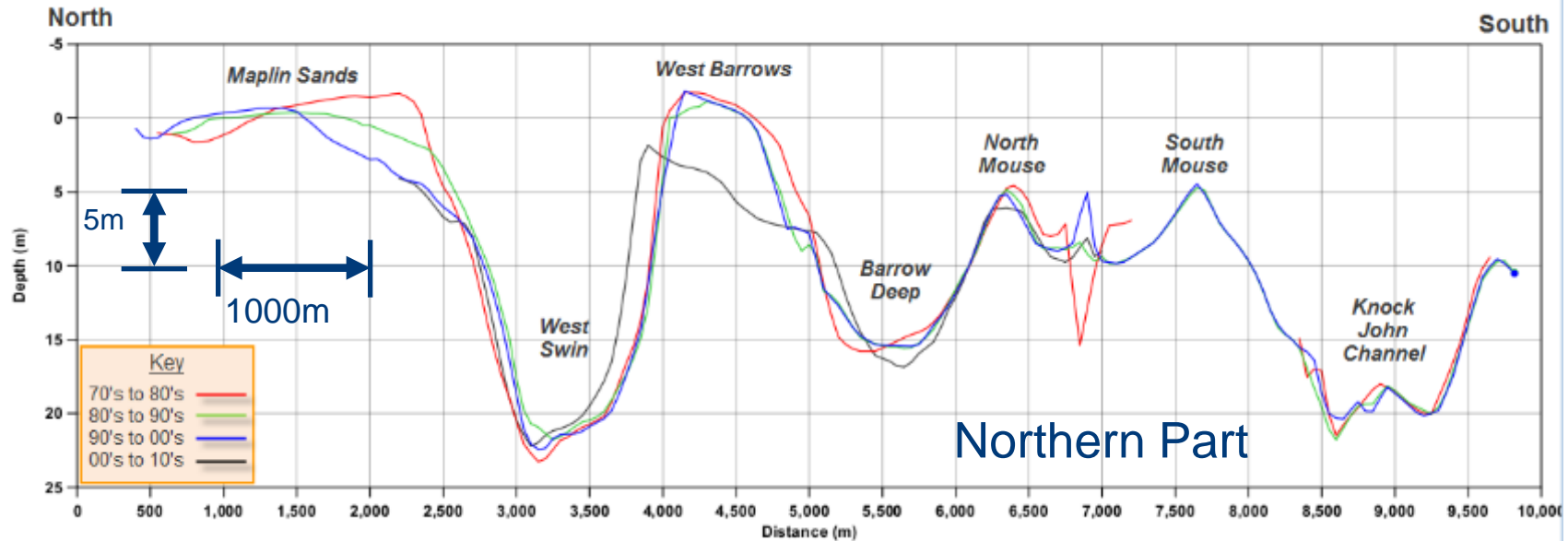
# Estuary Observations – Bed Differences



# Estuary Observations – Cross Section (1)



# Estuary Observations – Cross Section (2)



# Conclusions

---

- Morphology becomes progressively more dynamic downstream/seaward.
- Dynamic river shoals are clearly evident.
- This holistic approach allows the PLA to:
  - Understand the relative scale of morphological changes.
  - Target future survey effort.
  - Plan future access into the port.
  - Support the Thames Vision Goals with a strong evidence base.



**Thank You**





## **Thames Vision**

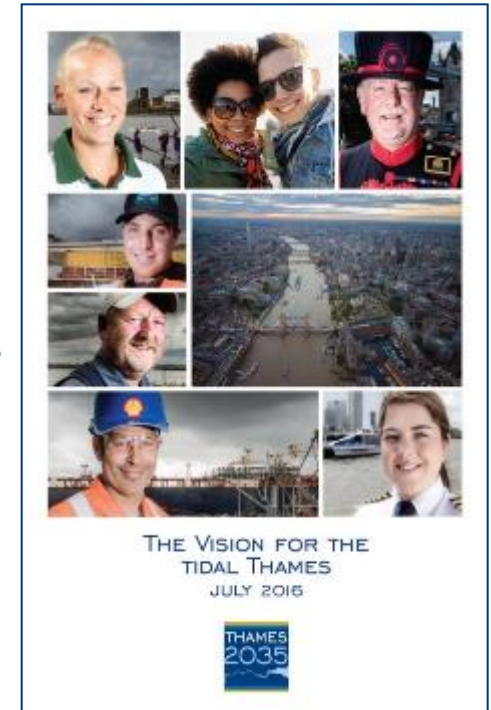
Katherine Riggs

Director of Thames Vision

# Thames Vision, July 2016

---

- **Port of London:** More trade, more jobs
- **Inland Freight:** More goods off roads onto the river
- **Passenger Transport:** More passenger journeys
- **Sport & Recreation:** More participants
- **Environment & Heritage:** Cleanest Thames since Industrial Revolution
- **Community & Culture:** More people coming to enjoy the Thames and its banks



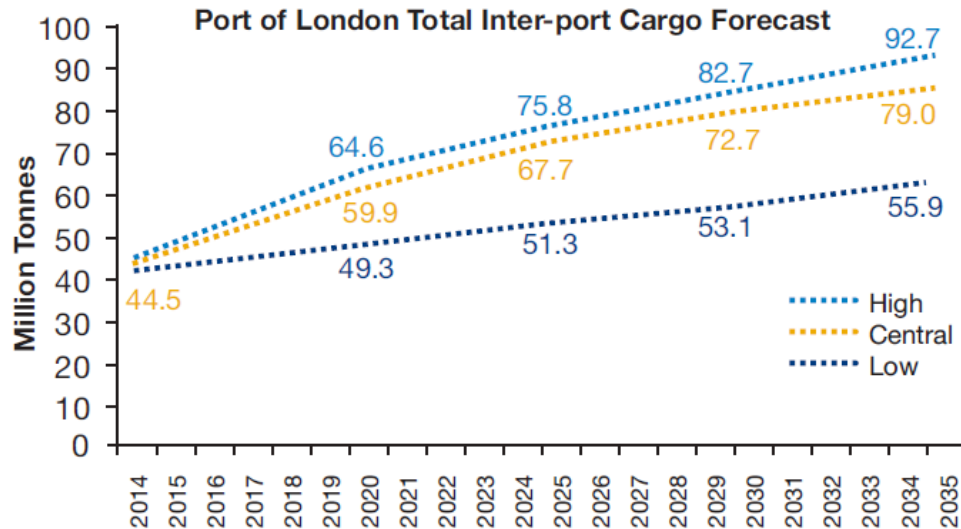
# Goal: Port of London

---



*The busiest ever Port of London, handling 60 – 80 million tonnes of cargo each year, on the doorstep of Europe's biggest metropolitan consumer market.*

# Port of London: Context



Source: Stamford Research Group, 2015



- UK's second biggest port
- Vital infrastructure for London, South East and UK
- Over 50 million tonnes of trade in 2016 for the first time in a decade

# Goal: Inland freight

---



*More goods and materials routinely moved between wharves on the river – every year over 4 million tonnes carried by water – taking over 400,000 lorry trips off the region's roads.*



# Inland Freight: Context

---

- UK's busiest inland waterway
- 5.5 million tonnes carried by the river in 2014
- Peruvian wharf reactivated - first movement of waterborne cargo at wharf since 1993



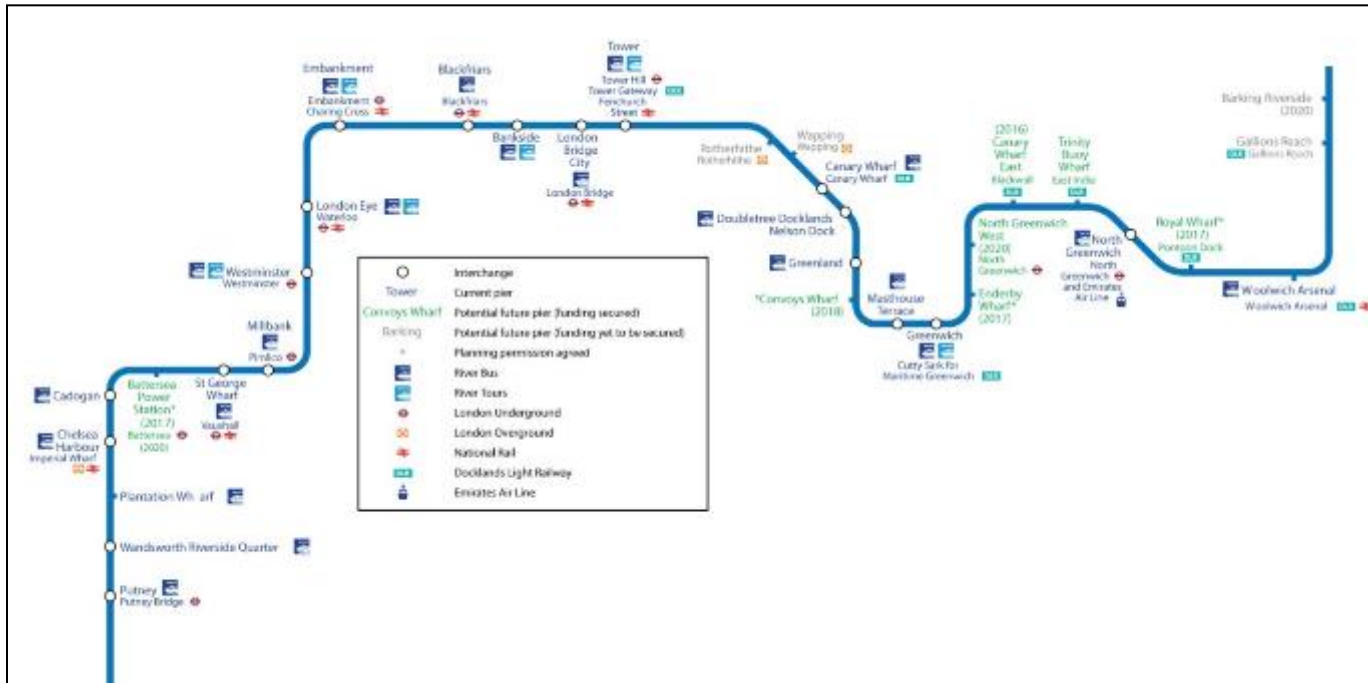
# Goal: Passenger Transport

---



*Double the number of people travelling by river – reaching 20 million commuter and tourist trips every year.*

# Passenger Transport: Context



- 10.3 million passenger journeys in 2015
- £68 million in passenger and cruise-related services planned over next five years



# Goal: Sport & Recreation

---



*Greater participation in sport and recreation on and alongside the water.*

# Sport & Recreation: Context

---



- Over 120 clubs on the tidal Thames
- Aspiration to join up the Thames Path from source to sea

# Goal: Community & Culture

---



*A riverside which is a magnet for ramblers, historians, artists and others, whether living nearby, on the river or travelling from further afield.*



- 



# Goal: Environment & Heritage

---



*The river the cleanest since the Industrial Revolution, with improved habitats and awareness of heritage.*

# Delivering the Environment & Heritage Goal

---



## Five Priority Actions:

- Tideway Tunnel
- Water Quality
- New and Green Technologies
- Historic Environment
- Biodiversity





**Thank You**