

## NOTICE TO MARINERS M23 of 2020

### KINGS REACH

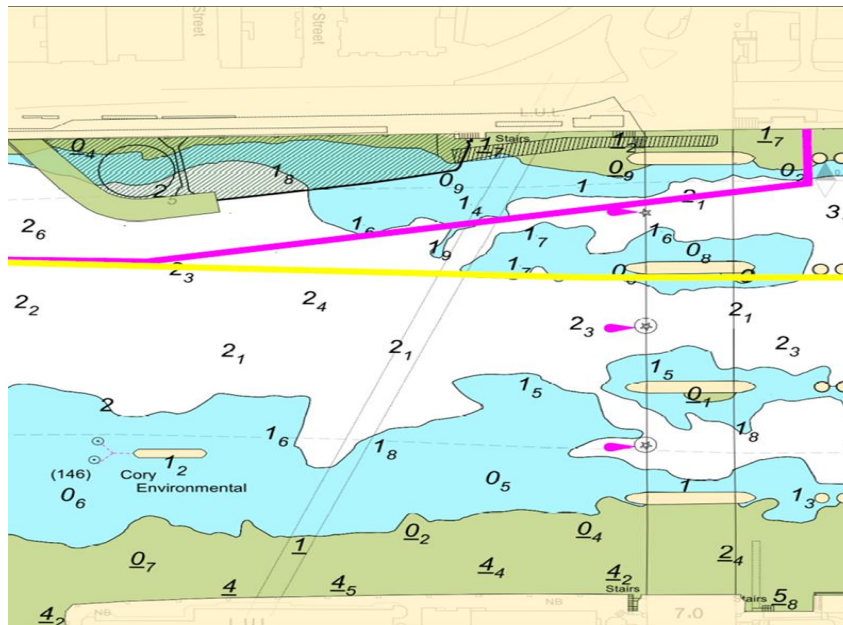
# CLOSURE OF NO 1 AND 2 ARCHES BLACKFRIARS BRIDGES

# BLACKFRIARS COFFERDAM CONSTRUCTION WORKS

This notice updates M41 of 2019 which is hereby cancelled.

Mariners are advised that contractors working on the Tideway Tunnel Project will continue works which will involve constructing a shaft and associated culverts on the north shore just upriver of Blackfriars Bridge.

Please see the chartlet below depicting the location of the construction works and the cofferdam as completed and the partially completed Fleet CSO Culvert Structure.



No vessels other than those engaged in the works or have permitted vessel status shall enter the navigation exclusion zone depicted by the yellow line on the chartlet.

The works which will include dredging, diving, piling, excavation, back filling operations and reinforced concrete construction works will take place using a variety of crane barges, supply barges, tugs and Multicat vessels and are expected to take approximately 12 months.

No 1 arch will be closed during construction operations and will be marked in accordance with the Port of London Authority Thames Byelaws 2012 namely:

- By day, three red discs 0.6 metres in diameter at the points of an equilateral triangle with the apex downwards and the base horizontal
- By night, three red lights in similar positions to the discs displayed by day.

A smart signal light is fitted above no 2 arch of Blackfriars Rail Bridge.

The smart signal light will be controlled remotely by London VTS and is capable of displaying three separate signals with their meaning as described below.



Closed to navigation to all vessels



Open to navigation to all vessels



- Only “PERMITTED VESSELS” may transit through No 2 arch.
- It remains the responsibility of the “PERMITTED VESSEL'S” master to ensure that he can safely manoeuvre through No 2 arch and around the marine plant involved in the Blackfriars Tideway worksite with due regard to the height and the direction of tide. There are no under water obstructions on the approach to, within, or on the exit from No 2 arch.
- “PERMITTED VESSELS” using No 2 arch are not to overtake vessels navigating inwards through No 3 arch.

Operators of commercial vessels wishing to be included on the “PERMITTED VESSELS” list should make a request to the Upper District Harbour Master. Following satisfactory trials their vessels may be added.

At times RY flags may be exhibited at the site, in conjunction with “proceed with caution / slow down requests” in VTS broadcasts.

Vessels are requested to be mindful of the nature of the works, be aware of vessels proceeding to and from the works, their wash when passing the works, and to pass at a safe distance particularly from any yellow pellet buoys which may be marking anchors, sinkers or other under water obstructions.

Further details will be broadcast by London VTS on VHF Channel 14.

20<sup>th</sup> July 2020

Port of London Authority  
London River House, Royal Pier Road,  
Gravesend, Kent DA12 2BG

Sarah Macleod  
Acting Harbour Master  
(Upper)



EXPIRY DATE: 31<sup>st</sup> July 2021  
TO RECEIVE FUTURE NOTICES TO MARINERS BY **E-MAIL**,  
PLEASE REGISTER VIA OUR WEBSITE [www.pla.co.uk](http://www.pla.co.uk)  
**Telephone calls, VHF radio traffic, CCTV and radar traffic images may  
be recorded in the VTS Centres at Gravesend and Woolwich**  
All Current Notices to Mariners can be found here -  
<http://www.pla.co.uk/Safety/Regulations-and-Guidance/Notices-to-Mariners/Notices-to-Mariners>

