

## NOTICE TO MARINERS      M18 of 2021

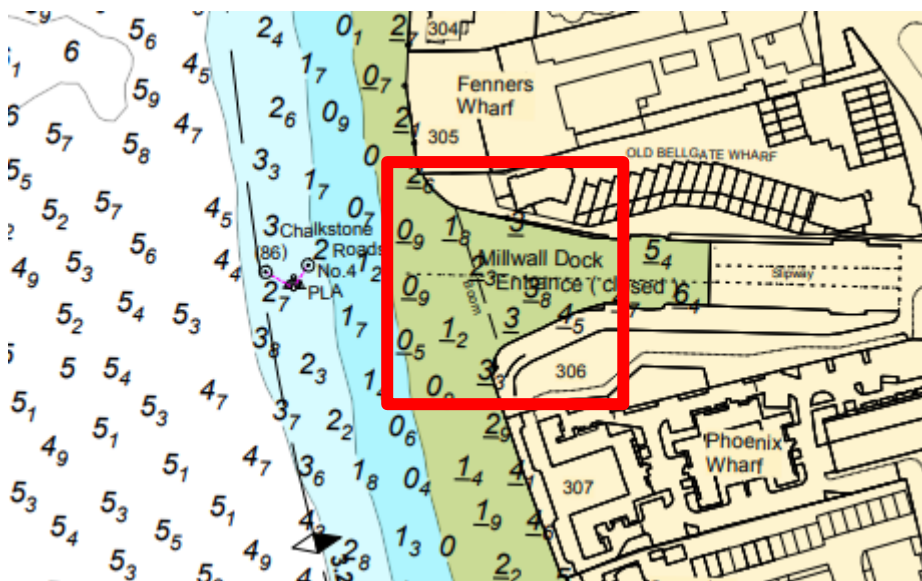
### LIMEHOUSE REACH DISUSED MILLWALL DOCK ENTRANCE BOOM REMOVAL

On or about the 19<sup>th</sup> April 2021 for approximately three-days, marine contractors working on behalf of Canal & River Trust, will be undertaking works to remove the boom and associated works at the disused Millwall Dock Entrance.

The works will be undertaken from the spud-leg barge SCHELDEMOND I, with support workboats.

The works will take place during daylight only and may require vessels to proceed with caution or at slow speed. Such requests will be broadcast by London VTS on Channel 14, as per the requirements detailed in Notice to Mariners No. 8 of 2021.

The chartlet below shows the location of the working area.



Further information will be broadcast by London VTS on Channel 14.

**9 April 2021**

Port of London Authority  
London River House, Royal Pier Road,  
Gravesend, Kent DA12 2BG

**Darren Knight**  
Deputy Harbour Master



EXPIRY DATE: 26<sup>th</sup> April 2021  
TO RECEIVE FUTURE NOTICES TO MARINERS BY E-MAIL,  
PLEASE REGISTER VIA OUR WEBSITE [www.pla.co.uk](http://www.pla.co.uk)  
Telephone calls, VHF radio traffic, CCTV and radar traffic images may be recorded in the VTS Centres at  
Gravesend and Woolwich  
All Current Notices to Mariners can be found here - <http://www.pla.co.uk/Safety/Regulations-and-Guidance/Notices-to-Mariners/Notices-to-Mariners>