



PORT OF LONDON
AUTHORITY

Port of London Authority
Chart Correction Advice
Date: 25th April, 2019

CCA No: 2019/14



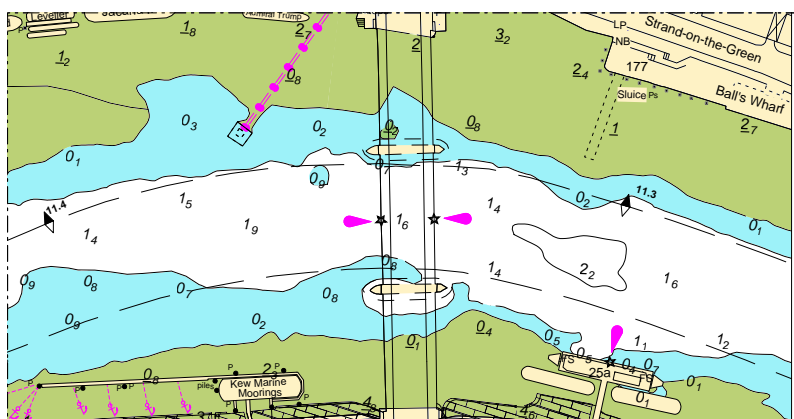
Chart: Brentford Quay to Kew Bridge

PLA Chart No. 306
HO Ref No. 113-306-012
Previous Chart Correction: 2017/46

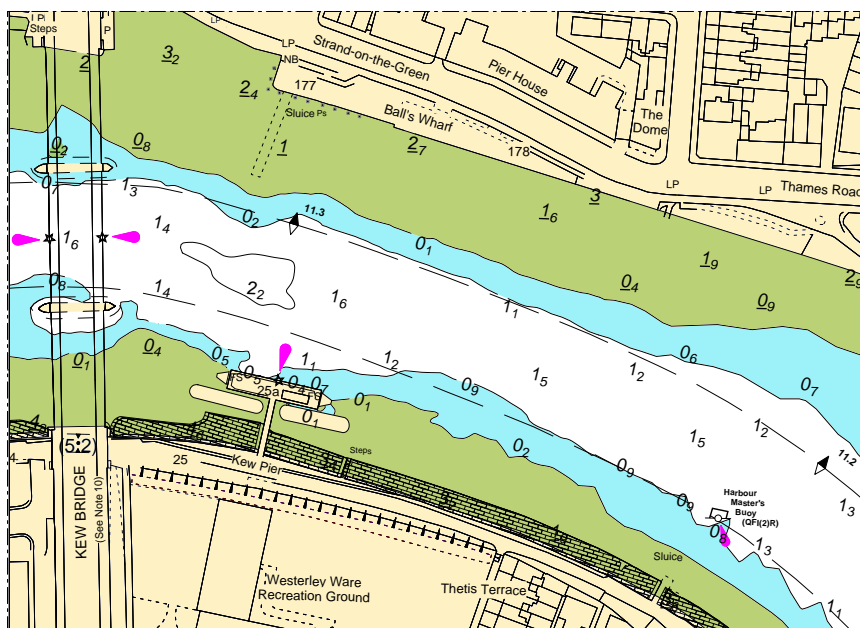
PLA Chart No. 307
HO Ref No. 113-307-080
Previous Chart Correction: 2017/46

The accompanying block correction shows:
Removal of the pontoon jetty above and the reopening of span 1 at Kew Bridge.
Revised soundings and contours Kew Pier to Harbor Master's Buoy

PLA 306



PLA 307



For further information see the PLA hydrographic service website:

<http://www.pla.co.uk/Safety/PLA-Hydrographic-Service-Published-Surveys>