



PORT OF LONDON
AUTHORITY

Port of London Authority
Chart Correction Advice
Date: 23rd April, 2019

CCA No: 2019/11



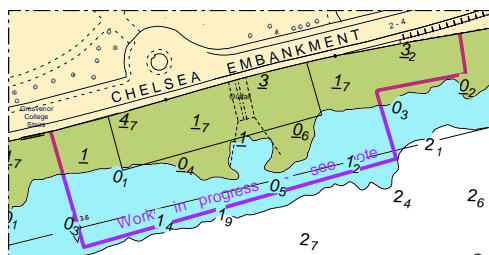
Chart: Battersea to Chelsea Reach
& Nine Elms Reach

PLA Chart No. 314
HO Ref No. 113-314-088
Previous Chart Correction: 2018/17

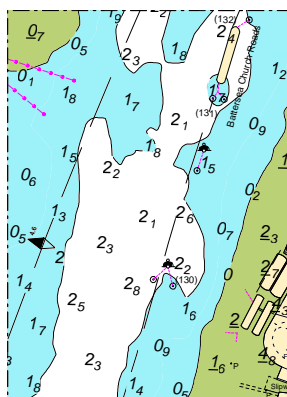
PLA Chart No. 315
HO Ref No. 113-315-050
Previous Chart Correction: 2018/17

The accompanying block correction shows:
TTT Cofferdam under construction at Chelsea Embankment
Temporary Barge Single Screw Mooring installed
& PDC removed from Battersea Church Roads (upper)

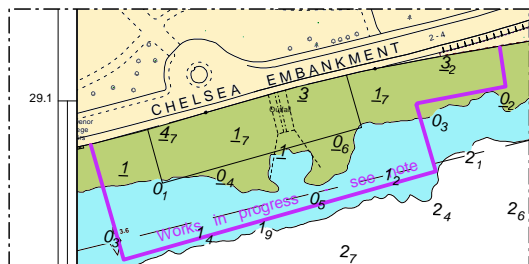
PLA 314



PLA 314



PLA 315



For further information see the PLA hydrographic service website:

<http://www.pla.co.uk/Safety/PLA-Hydrographic-Service-Published-Surveys>