



PORT OF LONDON  
AUTHORITY

Port of London Authority  
Chart Correction Advice  
Date: 27th February, 2019



**CCA No: 2019/10**

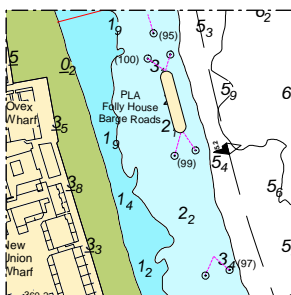
Chart: Blackwall Reach

PLA Chart No. 321  
HO Ref No. 113-321-190  
Previous Chart Correction: 2018/22

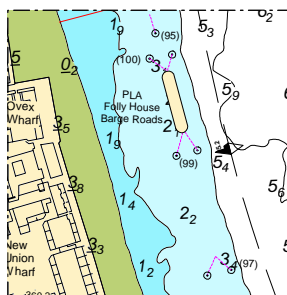
PLA Chart No. 322  
HO Ref No. 113-322-360  
Previous Chart Correction: 2017/35

The accompanying block correction shows:  
Removal of Mooring No.98, Folly House Barge Roads, Blackwall Reach

PLA 321



PLA 322



For further information see the PLA hydrographic service website:

<http://www.pla.co.uk/Safety/PLA-Hydrographic-Service-Published-Surveys>