



PORT OF LONDON
AUTHORITY

Port of London Authority Chart Correction Advice Date: 1st March 2017



CCA No: 2017/7

Chart: Upper & Lower Pool

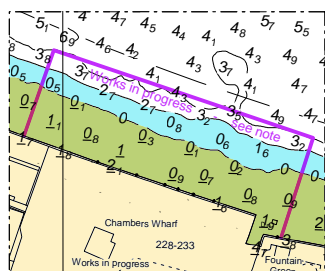
PLA Chart No. 318 / 319

HO Ref No. 113-318-266

HO Ref No. 113-319-130

Previous Chart Correction: 318MS - 2016/19, 319MS - 2015/22

The accompanying block corrections show where construction works will be progressing in relation to the Thames Tideway Tunnel. A note giving details has also been added.



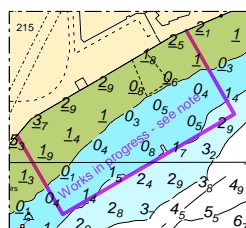
318MS

SPEED LIMITS

A speed limit of 12knts exists for all power driven vessels navigating in the Thames unless authorised by HM for high speed below Cherry Garden Pier
See PLA General Direction No. 34.

WORKS IN PROGRESS

Construction works will be progressing in the areas indicated, various restrictions will be in place from time to time, see PLA Notices to Mariners for latest information.



319MS

Off King Edward Memorial Park
north of Shadwell Basin

MOORINGS

Mooring screws are shown in their true position thus ○ and buoys shown as symbols.
Buoy numbers shown (32) are PLA references.

WORKS IN PROGRESS

Construction works will be progressing in the areas indicated, various restrictions will be in place from time to time, see PLA Notices to Mariners for latest information.

PLA REFERENCES

The numbers shown on the shore and in parentheses in the river adjacent to moorings refer to PLA licences.

PLA PUBLICATIONS

Refer to PLA Publications for further information:

1. PLA River Byelaws
2. General Directions for Navigation
3. PLA Tide Tables & Port Information
4. The River Thames Recreational Users Guide
5. Mariner's Guide to Bridges on the Tidal Thames

PLA HYDROGRAPHIC SERVICE WEBSITE

www.pla.co.uk/hydrohomepage

For further information see the PLA hydrographic service website:

<http://www.pla.co.uk/Safety/PLA-Hydrographic-Service-Published-Surveys>