



PORT OF LONDON  
AUTHORITY

# Port of London Authority Chart Correction Advice Date: 1st March 2017



**CCA No: 2017/6**

Chart: Nine Elms Reach

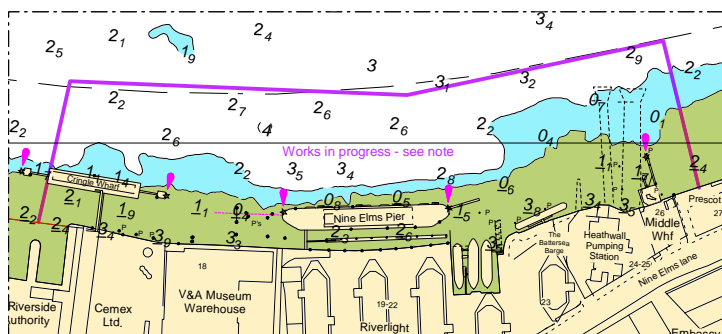
PLA Chart No. 315 / 316

HO Ref No. 113-315-050

HO Ref No. 113-316-178

Previous Chart Correction: 315MS - 2016/23, 316MS - 2017/2

The accompanying block corrections show where construction works will be progressing in relation to the Thames Tideway Tunnel. A note giving details has also been added.



315MS

**RESTRICTED AREA - ALBERT EMBANKMENT**  
A 15m exclusion zone exists has been established in the vicinity of Albert Embankment.  
See PLA Permanent Notice to Mariner P18.

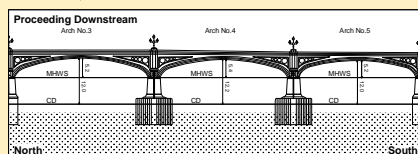
**WORKS IN PROGRESS**  
Construction works will be progressing in the areas indicated, various restrictions will be in place from time to time, see PLA Notices to Mariners for latest information.

316MS

**RESTRICTED AREA - LAMBETH REACH**  
A 70m exclusion zone exists off the Houses of Parliament.  
See PLA Permanent Notice to Mariner P18.

**BRIDGES** - Headway at the centre span above MHWS:  
LAMBETH BRIDGE = 6.4m  
WESTMINSTER BRIDGE = 5.4m  
CHARING CROSS RAILWAY BRIDGE = 7.0m  
WATERLOO BRIDGE = 8.6m

NB. Submerged obstructions in Arches Nos.3, 4 and 5 at Westminster Bridge due to extended bridge piers. (See plan insert below)



## SPEED LIMIT

A speed limit of 12knts exists for all power driven vessels navigating unless authorised by HM for high speed above Lambeth Bridge. See PLA General Direction No.34.

## WORKS IN PROGRESS

Construction works will be progressing in the areas indicated, various restrictions will be in place from time to time, see PLA Notices to Mariners for latest information.

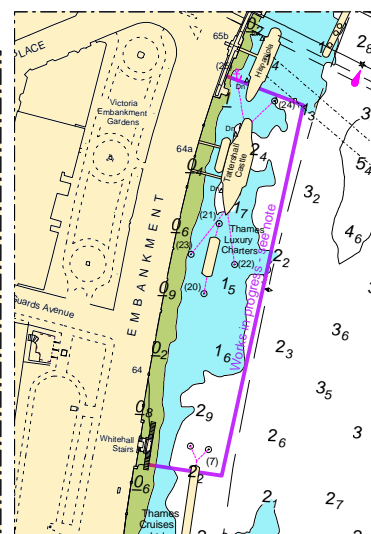
## PLA REFERENCES

The numbers shown on the shore and in parentheses in the river adjacent to moorings refer to PLA licences.

## PLA PUBLICATIONS

Refer to PLA Publications for further information:  
1. PLA River Byelaws  
2. General Directions for Navigation  
3. PLA Tide Tables & Port Information  
4. The River Thames Recreational Users Guide  
5. Mariner's Guide to Bridges on the Tidal Thames

PLA HYDROGRAPHIC SERVICE WEBSITE  
[www.pla.co.uk/hydrohomepage](http://www.pla.co.uk/hydrohomepage)



For further information see the PLA hydrographic service website:

<http://www.pla.co.uk/Safety/PLA-Hydrographic-Service-Published-Surveys>