



PORT OF LONDON
AUTHORITY

Port of London Authority
Chart Correction Advice
Date: 29th December, 2017

CCA No: 2017/47



Charts: Petersham Ait to Richmond Lock to Church Ferry, Isleworth

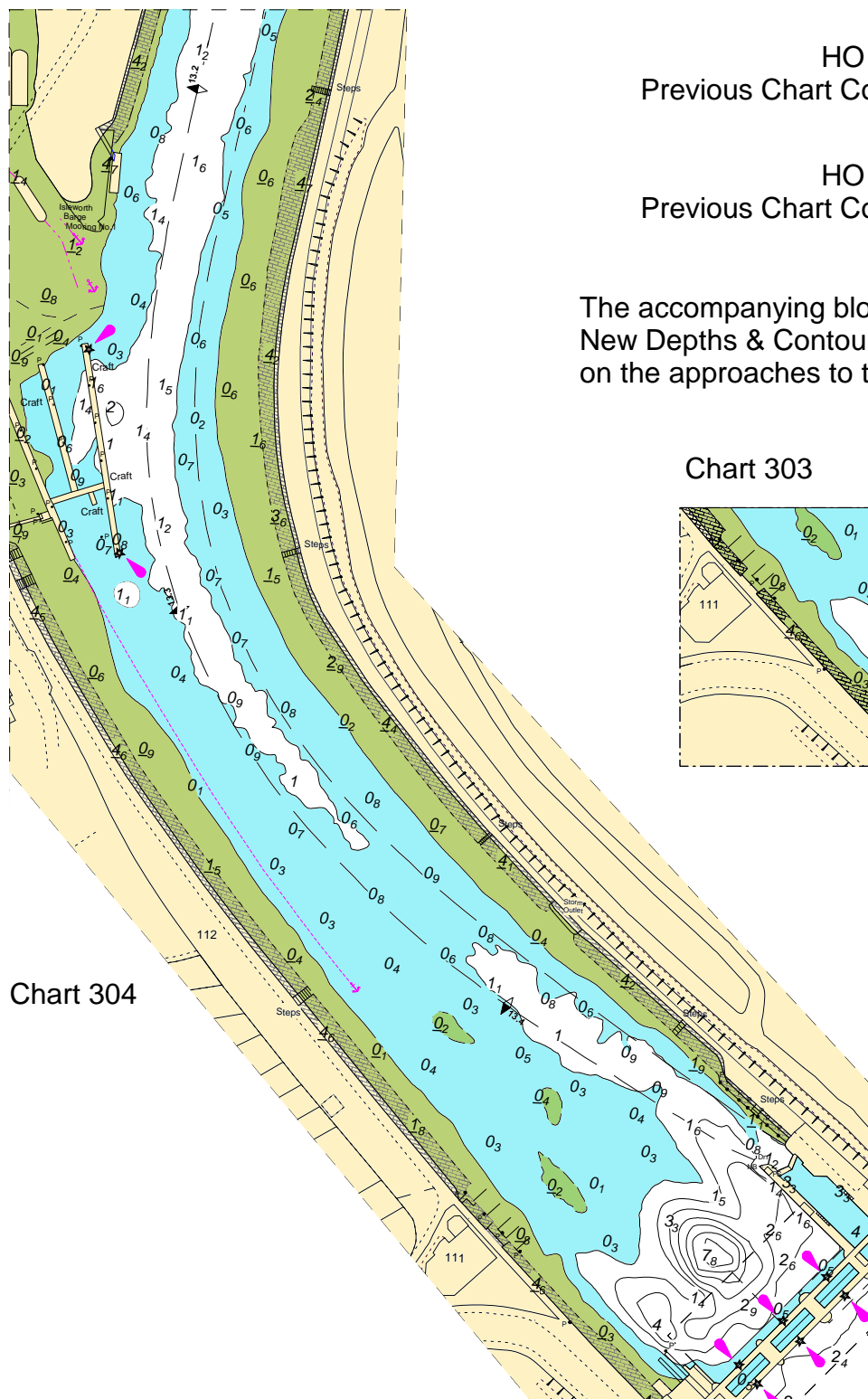


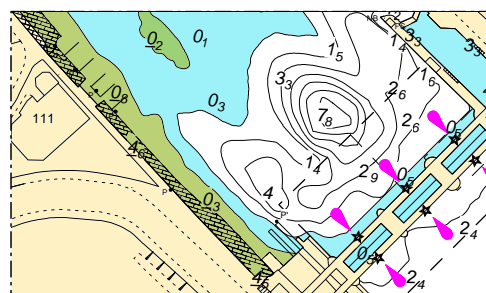
Chart 304

PLA Chart No. 303
HO Ref No. 113-303-014
Previous Chart Correction: New Edition

PLA Chart No. 304
HO Ref No. 113-304-087
Previous Chart Correction: New Edition

The accompanying block correction shows:
New Depths & Contours in the channel and
on the approaches to the lock & weir

Chart 303



For further information see the PLA hydrographic service website:

<http://www.pla.co.uk/Safety/PLA-Hydrographic-Service-Published-Surveys>