



PORT OF LONDON
AUTHORITY

Port of London Authority
Chart Correction Advice
Date: 18/12/2017

CCA No: 2017/45



Chart: Chelsea & Nine Elms Reaches

PLA Chart No. 314
HO Ref No. 113-314-088
Previous Chart Correction: 2017/34.

PLA Chart No. 315
HO Ref No. 113-315-050
Previous Chart Correction: 2017/41.

The accompanying block correction shows:
New depths off Battersea Pier, Reinstatement of upper dolphin
and current fendering on Battersea Power Station Jetty

Chart 314

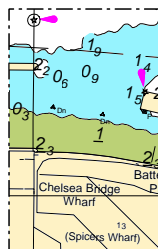
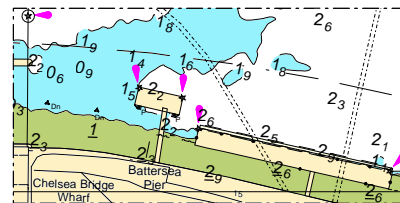


Chart 315



For further information see the PLA hydrographic service website:

<http://www.pla.co.uk/Safety/PLA-Hydrographic-Service-Published-Surveys>