



PORT OF LONDON
AUTHORITY

Port of London Authority
Chart Correction Advice
Date: 27th February 2017



CCA No: 2017/4

Chart: Kings Reach

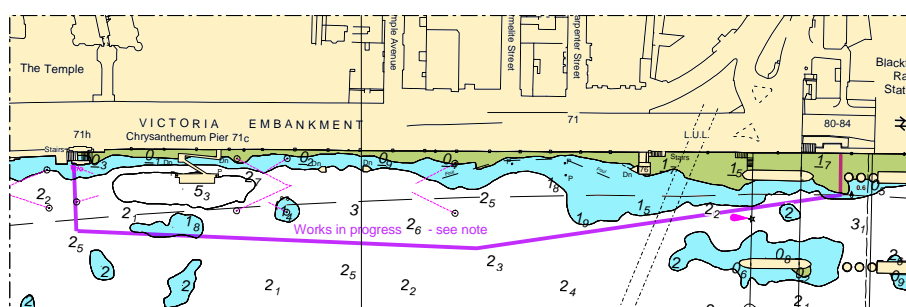
PLA Chart No. 317

HO Ref No. 113-317-130

Previous Chart Correction: 2016/31

The accompanying block correction shows the old Blackfriars Pier and brow have been removed. One outer and two inner piles remain along with the lower dolphin and structure.

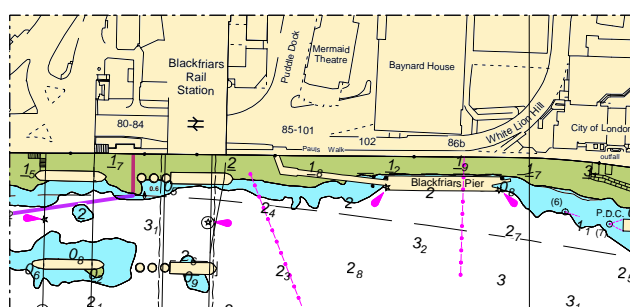
Also an area has been indicated showing where construction works will be progressing in relation to the Thames Tideway Tunnel. A note giving details has also been added.



An arch marked at the centre by day or night by two horizontal orange (or amber) lights, denote that the arch is one of the main working arches; these arches usually lie in the Authorised Channel normally used by commercial vessels. Other arches are available for navigation by vessels when height of tide, draft and air draft permit, unless marked as being closed for navigation.

WORKS IN PROGRESS

Construction works will be progressing in the areas indicated, various restrictions will be in place from time to time, see PLA Notices to Mariners for latest information.



The Exclusion Zone previously indicated around the construction site for the new Blackfriars Pier has been removed as above along with the note in the text.

For further information see the PLA hydrographic service website:

<http://www.pla.co.uk/Safety/PLA-Hydrographic-Service-Published-Surveys>