



PORT OF LONDON
AUTHORITY

Port of London Authority
Chart Correction Advice
Date: 26th July, 2017



CCA No: 2017/21

Chart: Nine Elms Reach & Lambeth Reach

PLA Chart No. 315, 316

HO Ref No. 113-315-050.113-316-178

Previous Chart Correction: 2017/6, 2017/18

The accompanying block correction shows:

New mooring laid (13/07/17) upriver of Millbank Pier
Numbered (16) and called "Millbank Upper 2nd"

NB Chart 316 also to include mooring (15)

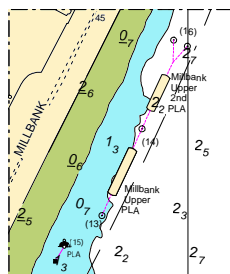


Chart 315

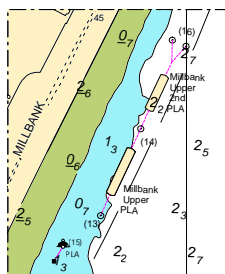


Chart 316

For further information see the PLA hydrographic service website:

<http://www.pla.co.uk/Safety/PLA-Hydrographic-Service-Published-Surveys>