



PORT OF LONDON
AUTHORITY

Port of London Authority
Chart Correction Advice
Date: 20th May 2016



CCA No: 2016/16

Chart: Greenwich Reach

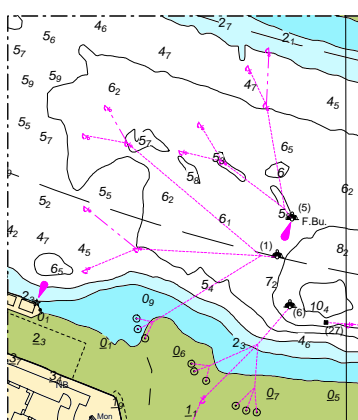
PLA Chart No. 320/321

HO Ref No. 113-320-059

HO Ref No. 113-321-190

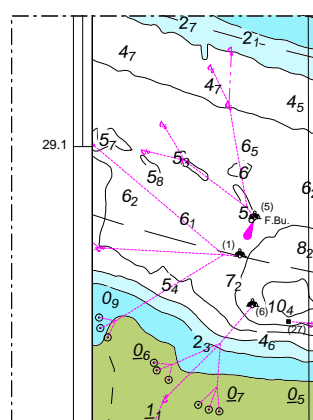
Previous Chart Correction: 320 - 2016/10, 321 - 2016/14

The accompanying block correction shows revisions to Greenwich Ship Tier with new layout and anchor positions.



MS 320

0 1 W



MS 321

0 1 W

For further information see the PLA hydrographic service website:

<http://www.pla.co.uk/Safety/PLA-Hydrographic-Service-Published-Surveys>