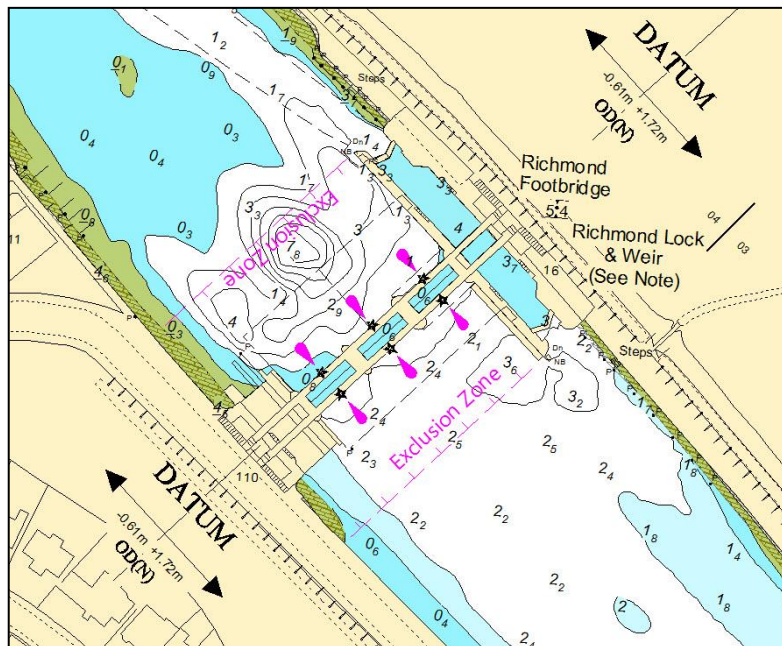


NOTICE TO MARINERS U18 of 2017

RICHMOND LOCK, WEIR AND FOOTBRIDGE EXCLUSION ZONE

There have recently been an increasing number of incidents involving recreational vessels navigating through Richmond Lock, Weir and Footbridge while the weirs are being operated.

For the safety of vessels and personnel, an exclusion zone has subsequently been established at Richmond Footbridge, Lock and Weir from the extremities of the Lock islands in a line across the river to the Middlesex shore as illustrated in the chartlet below.



Mariners should not enter the Richmond Lock, Weir and Footbridge Exclusion Zone whilst the weirs are in the lowered position or when they are being operated. Only when the weir gates are fully raised and the Closed Arch Signs have been removed is it permitted to navigate into the navigation exclusion zone and through Richmond Footbridge No. 2 or No. 3 arches.

Only those vessels manoeuvring on or to the Lock island berths, vessels engaged in emergency operations or smaller vessels wishing to utilise the boat rollers in No. 1 arch are exempt from this requirement.

**21 November
2017**

Port of London Authority
London River House, Royal Pier Road,
Gravesend, Kent DA12 2BG

**BOB BAKER
CHIEF HARBOUR MASTER**



TO RECEIVE FUTURE NOTICES TO MARINERS BY **E-MAIL**,
PLEASE REGISTER VIA OUR WEBSITE www.pla.co.uk
Telephone calls, VHF radio traffic, CCTV and radar traffic images may
be recorded in the VTS Centres at Gravesend and Woolwich

