

WANDSWORTH REACH TO MORTLAKE REACH THE UNIVERSITY BOAT RACE LOCAL TRAFFIC CONTROL & RIVER CLOSURE

The University Boat Race will take place on Saturday 30th March 2024. In order to facilitate this event a programme of events will take place between Wandsworth Bridge and Kew Railway Bridge, between Monday 25th March and Saturday 30th March 2024.

Monday 25th March to Friday 29th March 2024 – Increased Rowing Activity

River users are advised that there will be increase in rowing activity between Wandsworth Bridge and Kew Railway Bridge throughout this period. While rowers are to remain compliant with the Tideway Code throughout, passing vessels are to navigate with caution, keeping wash to a minimum.

Thursday 28th March 2024 – Local Traffic Control for Practice Starts

Local Traffic Control will be in place between Broomhouse Draw Dock and London Rowing Club from **1200 until 1500** to facilitate practice starts; this will be undertaken from PLA Harbour Service Launch exhibiting blue flashing lights. The Harbour Service Launch will maintain a listening watch on VHF Ch14 with the prefix **"THAMES PATROL"**.

All power-driven vessels intending to navigate between Broomhouse Draw Dock and Putney Pier are to call **'THAMES PATROL'** on VHF Channel 14 as follows:

- Inbound at Wandsworth Bridge
- Outbound at Fulham Football Club
- Prior to leaving a berth or mooring between Wandsworth Bridge and Fulham Football Club

04/03/2024

Port of London Authority
London River House, Royal Pier Road,
Gravesend, Kent DA12 2BG

SOPHIE WILLIAMS
Deputy Harbour Master

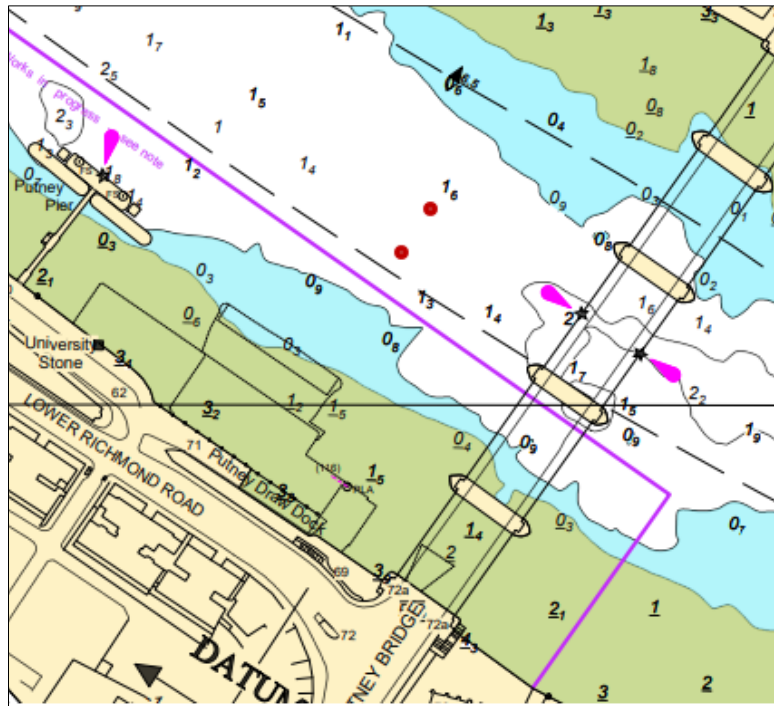
EXPIRY DATE: 31/03/2024

TO RECEIVE FUTURE NOTICES TO MARINERS BY **E-MAIL**,
PLEASE REGISTER VIA OUR WEBSITE pla.co.uk/Subscription-to-Newsletter

Telephone calls, VHF radio traffic, CCTV and radar traffic images may be recorded in the
VTS Centres at Gravesend and Woolwich



View all Active Notice to Mariners
using the above QR Code



River users should note that temporary stake boat moorings will be established on the start line of the Boat Race course from approximately 0900 and recovered on conclusion of the practice starts. These will be positioned upstream of Putney Bridge centre arch, as marked in red on the chartlet, and marked by pellet buoys. The distance between these pellet buoys will be 18m and mariners are to navigate with caution in their vicinity.

Local Traffic Control will be established as necessary to facilitate the laying/recovery of these temporary moorings, this will be conducted from a Harbour Service Launch exhibiting blue flashing lights. The Harbour Service Launch will maintain a listening watch on VHF Ch14 with the prefix "**THAMES PATROL**".

Further details will be broadcast by London VTS on **VHF Channel 14**.

EXPIRY DATE:
31/03/2024

Port of London Authority
 London River House, Royal Pier Road,
 Gravesend, Kent DA12 2BG

SOPHIE WILLIAMS
 Deputy Harbour Master

Friday 29th March 2024 – Fixtures

Four fixtures will take place, as follows:

14:13	Women's Lightweight Boat Race – Putney to Mortlake course
14:33	Women's Vets Boat Race – Putney to Hammersmith Bridge
14:53	Men's Vets Boat Race – Putney to Hammersmith Bridge
15:13	Men's Lightweight Boat Race – Putney to Mortlake course

Each race will consist of two 'eights' racing with the flood tide from the University Stone at Putney to their respective finish. These fixtures will be followed by up to five launches.

Vessels navigating in the area during these times should take note of the following:

- Whilst rowing vessels will be racing, the rowing vessels and following launches are required to navigate in accordance with the International Regulations for Preventing Collisions at Sea, 1972 (COLREGS).
- Whilst racing vessels may be traveling at speeds up to approximately 10 knots.
- Motor vessels in the area are to be aware of the race and are to navigate with caution, keeping wash to a minimum.

Further details will be broadcast by London VTS on **VHF Channel 14**.

Saturday 30th March 2024 – River Closure for The University Boat Race

The river will be **Closed to Navigation** between Wandsworth Bridge and Kew Railway Bridge, from **1000 until approximately 1700**. Should there be delays to the running of the event, it may be necessary to extend the river closure for an additional period, not expected to exceed 60 minutes.

The closure will be indicated by Harbour Service Launch exhibiting blue flashing lights at the extremities of the closure. The Harbour Service Launch will maintain a listening watch on VHF Ch14 with the prefix "**THAMES PATROL WANDSWORTH**" or "**THAMES PATROL KEW**". Only pre-agreed vessels permitted by the Harbour Master will be allowed to enter the closure area.

Vessels permitted by the Harbour Master to navigate between Wandsworth Bridge and Kew Railway Bridge (*see Note 1*) are to proceed to their appointed moorings, anchorages, or otherwise leave the closure area **before 1300**. All other craft must clear the area before the river closure commences. Those on a mooring are to be mindful of the effects of wash from passing vessels.

Each race will be followed by a flotilla of pre-approved vessels, as authorised by the Harbour Master. No other vessels may be underway on the closed section of the river.

Once the river has been re-opened, vessels passing Putney Hard should pass with caution whilst equipment and passengers are disembarked.

Further details will be broadcast by London VTS on **VHF Channel 14**.

Note 1: In special cases the Harbour Master, in conjunction with the event organiser, will consider approving non-event traffic to be permitted in the closure area until 1300. Should any operator wish to be considered they should formally apply to by email to harbourmaster@pla.co.uk no later than the 13th March 2024.

EXPIRY DATE:
31/03/2024

Port of London Authority
 London River House, Royal Pier Road,
 Gravesend, Kent DA12 2BG

SOPHIE WILLIAMS
Deputy Harbour Master