



Tidal Thames Environment and Heritage Conference

The River Users' perspective: Using the river to bring about improvements to the environment

31 January 2019

Thames Vision Progress Update

Nadine Collins-Smith, Head of Thames Vision Delivery

Increasing river use – Thames Vision 2035



Goals:

- **Port** - Busiest ever Port of London, handling 60 – 80 m tonnes of cargo a year
- **Passenger** trips - Double the number to 20 million trips a year
- Inland Waterways **Freight** - More goods and materials moved regularly: +4 m tonnes, taking over 400,000 lorry trips off roads
- **Sport & Recreation** - Greater participation in sport and recreation on and alongside the water
- **Community** - Thriving riverside, a magnet for visitors and locals alike
- **Environment & Heritage** - The cleanest river since the Industrial Revolution, with improved habitats

Port trade

- Port trade in 2018: 53.2 mt (+17%, compared to 2015 baseline: 45.3 mt)
- Sustained private sector investment
 - Tilbury2, London Gateway, Cobelfret
- Lower Thames Crossing announced
- Port of London Infrastructure Group
- First PLA Investment Plan launched



News: London Gateway Port wins multiple services, including East-West lines

Top Ten UK Ports – 2017 data

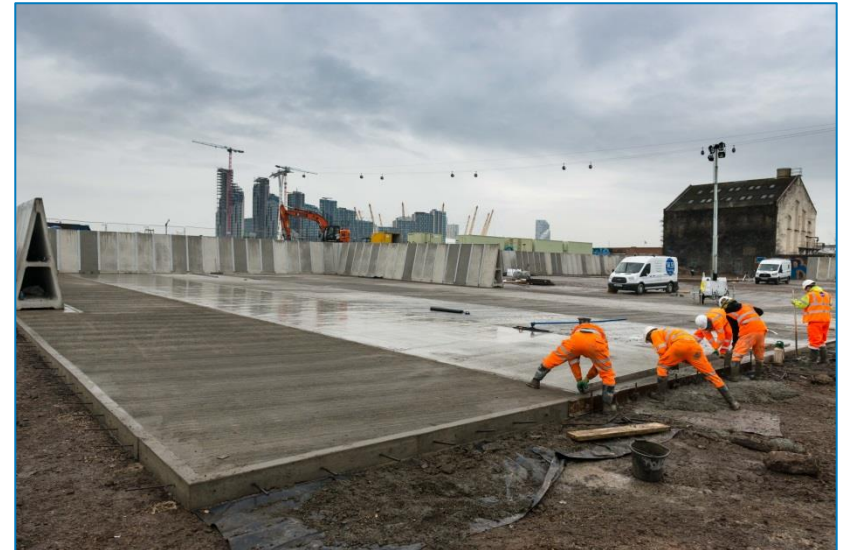
No. Port	Tonnage (mt)
1. Grimsby & Immingham	54.0
2. London	49.9
3. Southampton	34.4
4. Liverpool	32.5
5. Milford Haven	31.9
6. Felixstowe	29.0
7. Tees & Hartlepool	28.4
7. Forth	27.5
9. Dover	26.2
10. Belfast	18.2

Source: DfT 2017 Port Statistics



Inland waterways freight

- Underlying intra-port freight in 2017: 3.38 mt (+41%, compared to 2015 baseline: 2.39 mt)
- London Plan Review
- Safeguarded Wharves Review
- New vessels and barges in service
- +90% of borough policies reflect river for freight transport



News: building materials company Bretts now on site at Peruvian Wharf with development work underway for opening this year

Passenger transport

- Passenger trips in 2017: 10 m (-3%, compared to 2015 baseline: 10.3 m)
- New Pier Strategy – TfL/PLA
- Battersea Power Station Pier opened; more piers planned
- New vessels in service; new larger
- Wash Forum established



News: new £3.8 million MBNA Thames Clipper being built on the Isle of Wight is their largest ever with 222 passenger capacity

Sport & recreation

- First sports participation study
- More visitor mooring information
- Thames Path missing link: between Charlton and Woolwich
- Sport and recreation club best practice case studies published
- East London Sports & Recreation working group



News: Tideway's Annual Foreshore Festival growing alongside river events, including the Tunnel Cup

Community & culture

- Cultural vision for the Thames
- Expanded Thames Festival Trust and Thames Explorer Trust education programmes in E. London
- First phase of Illuminated River in 2019
- Tidal Thames Water Safety Forum, facilitating river suicide prevention



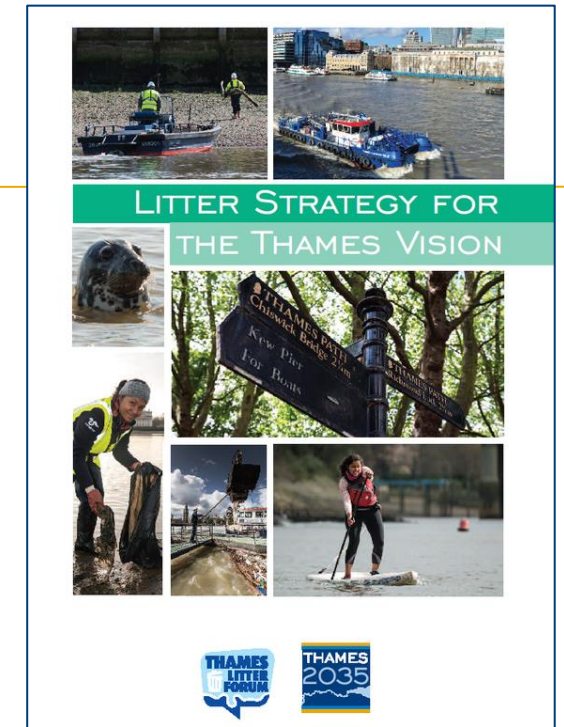
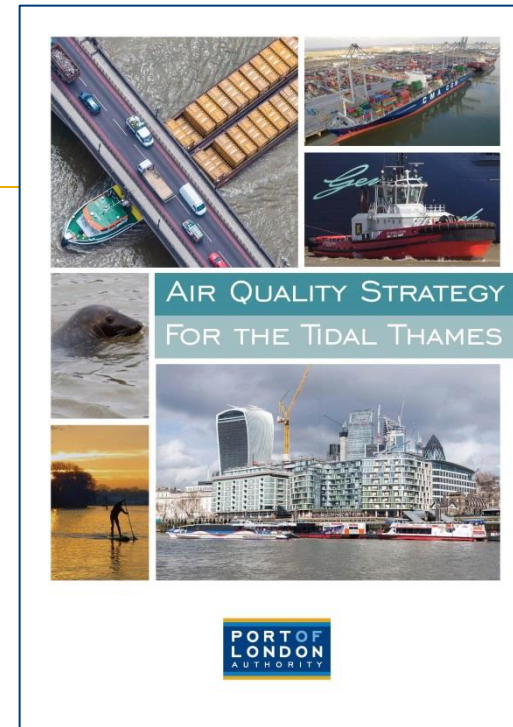
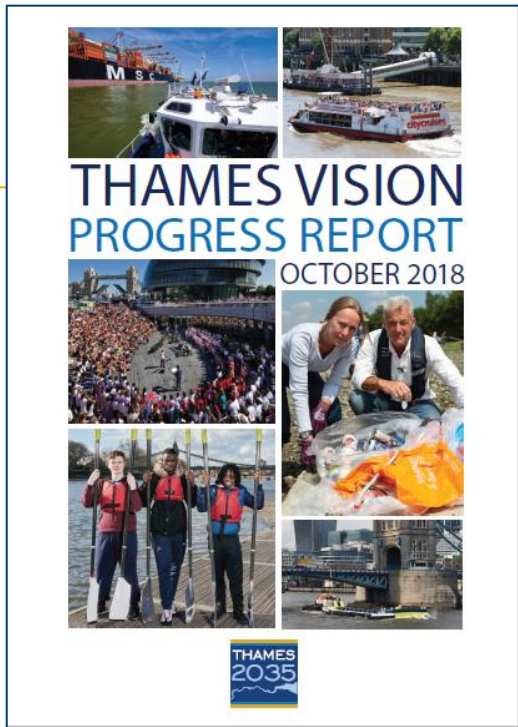
News: ten-year extension of PLA archive storage and curation agreement with the Museum of London Docklands

Environment & heritage

- Thames Tideway Tunnel progressing
- Air Quality Strategy launched
- PLA orders first hybrid pilot cutter
- Cleaner Thames campaign continues
- Thames Litter Strategy published
- For Fishes Sake West London



News: new hybrid Woolwich ferries in final phase of testing



- Web: www.pla.co.uk
- YouTube: portoflondon
- Twitter: @LondonPortAuth