

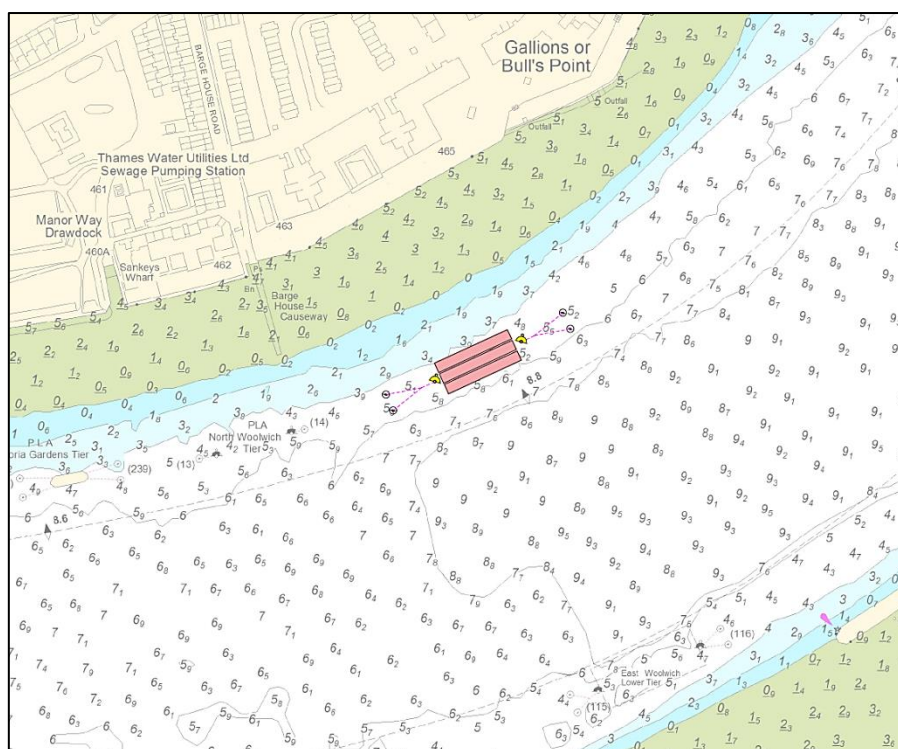
NOTICE TO MARINERS M97 of 2017

GALLIONS REACH

NORTH WOOLWICH BARGE MOORING

Mariners are advised that on or about the 12th October 2017, the North Woolwich Barge Mooring will be re-established for use as collar barge mooring.

Please see the chartlet below depicting the locations of the works.



The works will involve a DRIFTWOOD vessel undertaking lifting and mooring operations, which are expected to be completed in one day. The DRIFTWOOD vessel will maintain a continuous listening watch on VHF Channel 14.

Vessels are requested to be mindful of their wash when passing the works and to pass at a safe distance.

Further details will be broadcast by London VTS on VHF Channel 14.

6 October 2017

Port of London Authority
London River House, Royal Pier Road,
Gravesend, Kent DA12 2BG

BOB BAKER
CHIEF HARBOUR MASTER



TO RECEIVE FUTURE NOTICES TO MARINERS BY **E-MAIL**,
PLEASE REGISTER VIA OUR WEBSITE www.pla.co.uk
Telephone calls, VHF radio traffic, CCTV and radar traffic images may
be recorded in the VTS Centres at Gravesend and Woolwich

