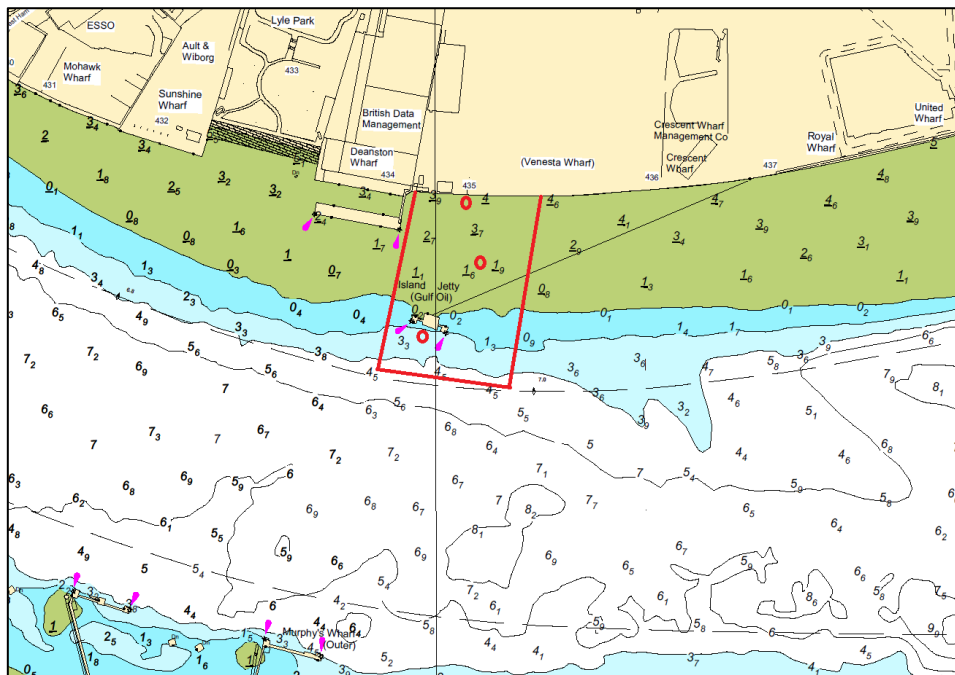


## NOTICE TO MARINERS M74 of 2018

### WOOLWICH REACH ISLAND JETTY GROUND INVESTIGATIONS

On or about **22<sup>nd</sup> October 2018** CMP Thames will be working on behalf of McLaughlin & Harvey and will conduct ground investigation works at Island Jetty for approximately 8 weeks. Three boreholes will be drilled into the river bed from the 'ZEEJACK' jack-up barge. All vessels involved will maintain a continuous listening watch on VHF channel 14.

The chartlet below depicts the location of the works and the limits of the navigation exclusion zone defined by the red boxed area. Only vessels engaged in the works may enter the exclusion zone.



The jack-up barge will display the lights and shapes as prescribed in Rule 27 of the International Regulations for Preventing Collisions at Sea 1972, namely:

- By day, three black shapes in a vertical line the highest and lowest of which are balls and the middle one a diamond.
- By night, three all round lights in a vertical line the highest and lowest of which are red and the middle one white.

London VTS will broadcast requests for vessels to “proceed with caution” or “proceed at slow speed”, as described in Permanent Notices to Mariners 4 of 2014 as required by the works. International Code Flags “Romeo Yankee” will be displayed when this is in effect.

Further details will be broadcast by London VTS on VHF Channel 14.

**15<sup>th</sup> October  
2018**

Port of London Authority  
London River House, Royal Pier Road,  
Gravesend, Kent DA12 2BG

**BOB BAKER  
CHIEF HARBOUR MASTER**



**EXPIRY DATE: 3<sup>rd</sup> January 2019**  
TO RECEIVE FUTURE NOTICES TO MARINERS BY **E-MAIL**,  
PLEASE REGISTER VIA OUR WEBSITE [www.pla.co.uk](http://www.pla.co.uk)  
**Telephone calls, VHF radio traffic, CCTV and radar traffic images may  
be recorded in the VTS Centres at Gravesend and Woolwich**

