

## NOTICE TO MARINERS M6 of 2017

# LIMEHOUSE REACH

## DUKE SHORE WHARF

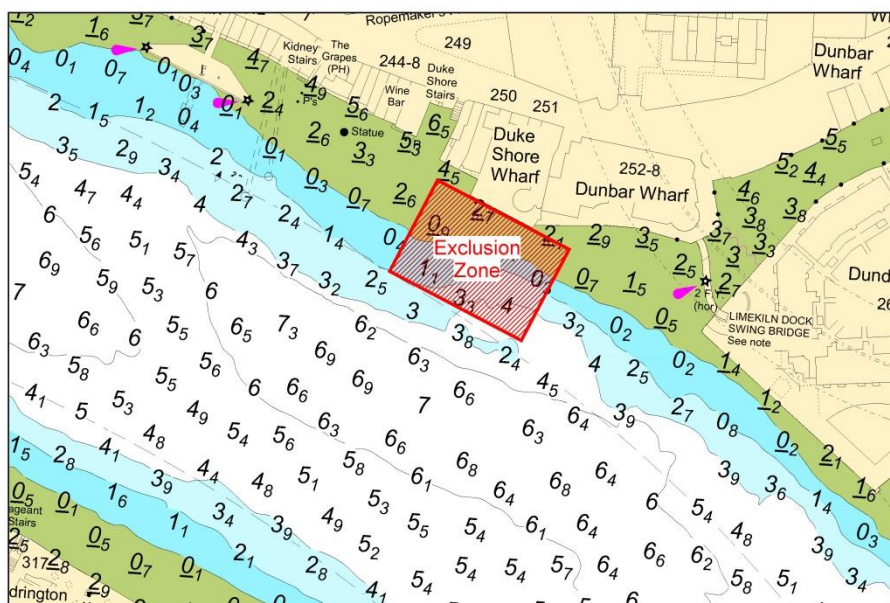
### WALL STABILISATION WORKS

On or about the 18<sup>th</sup> January 2017, contractors working on behalf of the Environment Agency will be undertaking emergency works to stabilise the river wall at Duke Shore Wharf, just above Limekiln Dock. The works will consist of the establishment of a platform on the foreshore and the placement of 12 20ft containers on the platform to provide support to the river wall. The containers will be arranged in a row of 6 containers stacked 2 containers high adjacent to the river wall.

The works will be undertaken by the Crane Barges GPS ARNAUD REGIS and GPS DEVON with the works being undertaken within the area indicated on the chart below. These works are expected to take approximately 4 to 6 weeks.

Please see the chartlet below depicting the location of the works and for the limits of the navigation exclusion zones defined by the red boxed area. Only vessels engaged in the works may enter the exclusion zone.

On completion of the works the containers will be marked with 2 green jetty lights on each end of the container structure.



Barges will display the lights and shapes as prescribed in Rule 27 of the International Regulations for Preventing Collisions at Sea 1972 namely:

- By day, three black shapes in a vertical line the highest and lowest of which are balls and the middle one a diamond.
- By night, three all round lights in a vertical line the highest and lowest of which are red and the middle one white.

Vessels are requested to be mindful of their wash when passing the works and to pass at a safe distance.

London VTS will broadcast requests for vessels to “proceed with caution” or “proceed at slow speed”, as described in Permanent Notices to Mariners 4 of 2014 as required by the works. International Code flags “Romeo Yankee” will be displayed when this is in effect.

Further details will be broadcast by London VTS on VHF Channel 14.

---

**18 January 2017**

Port of London Authority  
London River House, Royal Pier Road,  
Gravesend, Kent DA12 2BG

**BOB BAKER**  
**CHIEF HARBOUR MASTER**



TO RECEIVE FUTURE NOTICES TO MARINERS BY **E-MAIL**,  
PLEASE REGISTER VIA OUR WEBSITE [www.pla.co.uk](http://www.pla.co.uk)  
**Telephone calls, VHF radio traffic, CCTV and radar traffic images may  
be recorded in the VTS Centres at Gravesend and Woolwich**

