

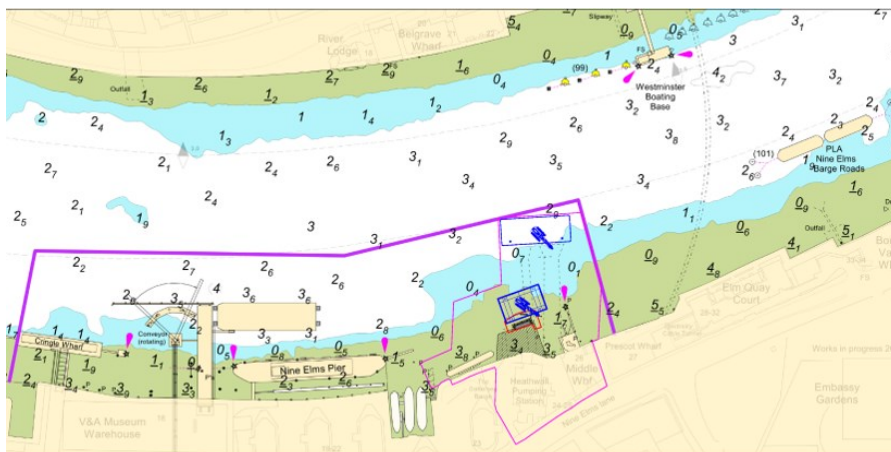
## NOTICE TO MARINERS      M40 of 2021

### NINE ELMS REACH HEATHWALL PUMPING STATION CONSTRUCTION WORKS

Mariners are advised that on or about 27<sup>th</sup> September 2021 contractors working on the Tideway Tunnel Project will commence construction of a small sheet piled cofferdam at the Heathwall Pumping Station worksite.

Works to construct will be supported by a Jack up Barge, Spud Leg Barge, and a hopper barge, with plant working from the barges, but also at low tide, directly on the foreshore. Moored positions of barges and those supporting the Jack Up will depend on the tide conditions, resulting in barges being moored in their most riverwards locations at low tide. Works are expected to be ongoing until mid-January 2023.

The Chartlet below shows the location of the cofferdam construction and most riverward barge mooring locations.



The vessels involved will maintain a listening watch on VHF channel 14. At times RY flags will be exhibited in conjunction with “proceed with caution / slow down requests” in VTS broadcasts. Vessels are requested to be mindful of the nature of the works, their proximity to the channel edge, and their wash when passing the works particularly with respect to crane lifting operations.

Further details will be broadcast by London VTS on VHF Channel 14.

**Terry Lawrence**  
Harbour Master (TTT)

**21 September 2021**

Port of London Authority  
London River House, Royal Pier Road,  
Gravesend, Kent DA12 2BG



EXPIRY DATE: 31 January 2023  
TO RECEIVE FUTURE NOTICES TO MARINERS BY **E-MAIL**,  
PLEASE REGISTER VIA OUR WEBSITE [www.pla.co.uk](http://www.pla.co.uk)  
**Telephone calls, VHF radio traffic, CCTV and radar traffic images may be recorded in the VTS Centres at Gravesend and Woolwich**  
**All Current Notices to Mariners can be found here - <http://www.pla.co.uk/Safety/Regulations-and-Guidance/Notices-to-Mariners/Notices-to-Mariners>**