

NOTICE TO MARINERS M31 of 2018

BUGSBY’S REACH

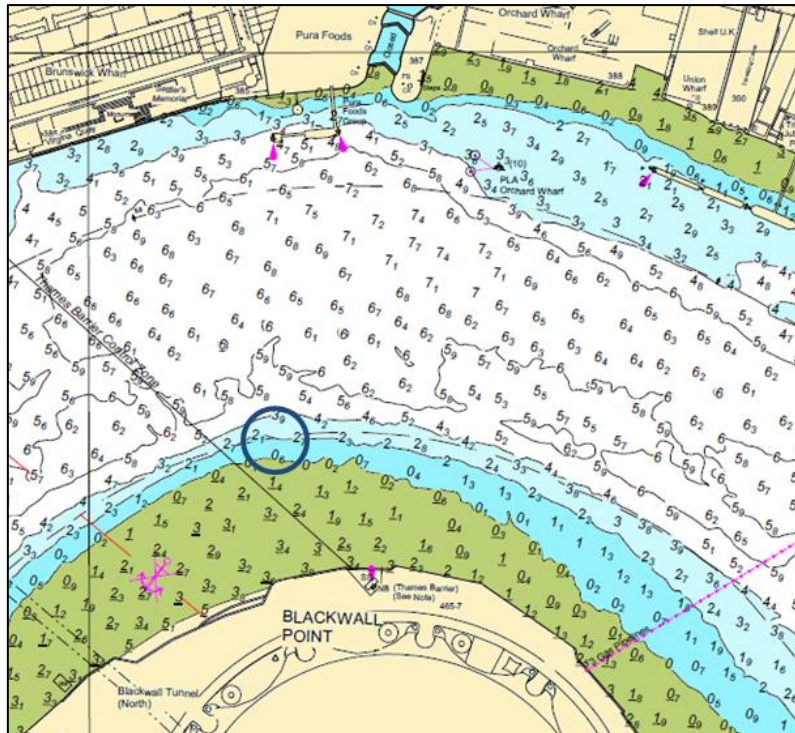
**BLACKWALL POINT SPECIAL MARK
AND CONTROL MEASURES**

Control measures will be put in place to facilitate the safe arrival, departure and berthing of ships over 210m LOA at Greenwich Ship Tier during the below dates:

Name	Arrival		Departure	
	Date	Time	Date	Time
Viking Sun	4 th May 18	04:15	6 th May 18	17:00
Viking Sea	25 th June 18	12:00	27 th June 18	13:15
Viking Sky	6 th July 18	07:00	8 th July 18	20:45
Viking Star	13 th July 18	01:30	15 th July 18	15:15
Viking Sea	23 rd July 18	10:15	26 th July 18	00:30
Viking Sky	3 rd August 18	05:30	5 th August 18	18:45
Viking Sun	24 th August 18	12:45	26 th August 18	13:45

Temporary Special Mark

A temporary lit yellow special mark FI.Y.2.5s will be placed on the southern limits of the navigational channel at Blackwall Point. The special mark will be placed prior to each arrival and removed after each departure. Please see the attached chartlet.



Navigation Safety Zone

A navigation safety zone will be established around each ship. The safety zone will extend 750 metres ahead to 250 metres astern of the ship between Margaretness and Greenwich Ship Tier. The Harbour Service Launch which will be undertaking Local Traffic Control of navigation supported by London VTS.

All vessels navigating in the vicinity of these ships are to pay particular attention to these movements and maintain a continuous watch on VHF Channel 14, following instructions from the attendant Harbour Service Launches displaying blue flashing lights; call sign prefix 'THAMES PATROL'.

Further details will be broadcast by **London VTS on VHF Channel 14.**

10 April 2018

Port of London Authority
London River House, Royal Pier Road,
Gravesend, Kent DA12 2BG

BOB BAKER
CHIEF HARBOUR MASTER



EXPIRY DATE: 31st August 2018
TO RECEIVE FUTURE NOTICES TO MARINERS BY **E-MAIL**,
PLEASE REGISTER VIA OUR WEBSITE www.pla.co.uk
**Telephone calls, VHF radio traffic, CCTV and radar traffic images may
be recorded in the VTS Centres at Gravesend and Woolwich**

