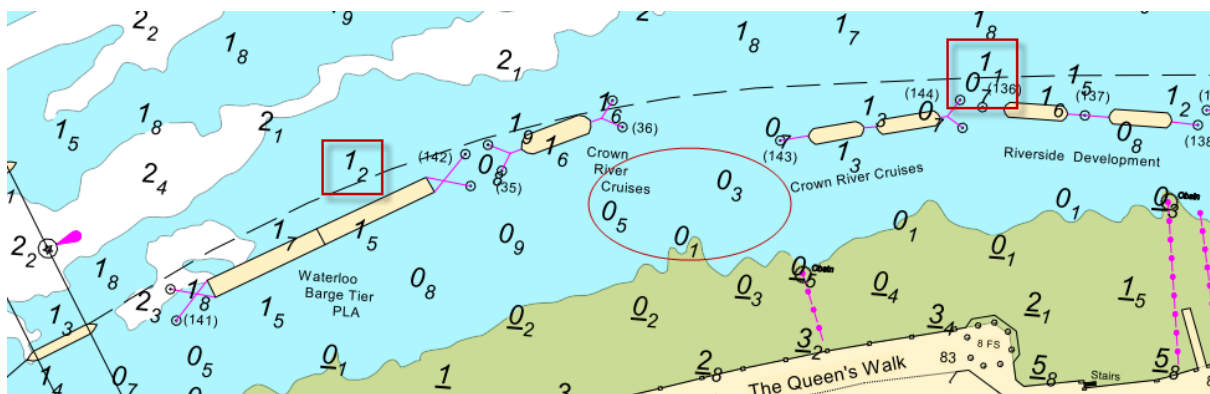


## NOTICE TO MARINERS      M29 of 2020

### KINGS REACH COIN STREET SHOAL

A recent Port of London Authority (PLA) Hydrographic Survey indicates that shoaling from the Coin Street Barge Roads towards the south shore has increased. On the edge of the navigational channel abreast of Waterloo Barge Tier the Least Depth is 1.2m and 1.1m between Crown River Cruises & Riverside Development Moorings, which are highlighted in the chart extract below.



The PLA's Hydrographic team continue to monitor this shoal and its impact on navigational safety at regular intervals.

Mariners are reminded that all PLA charts and corrections are available on the PLA's website and these can be viewed at the following address: <http://pla.co.uk/Safety/Hydrographic-surveys-and-chart-products>. It is a requirement to carry up to date charts and publications, any corrections to these publications should be applied promptly on publication.

Further information can be found at: - <http://pla.co.uk/About-Us/Shop> or alternatively, please contact the PLA Hydrographic Service on +44(0)1474 562207.

**29 July 2020**

Port of London Authority  
London River House, Royal Pier Road,  
Gravesend, Kent DA12 2BG

**Sarah Macleod**  
Acting Harbour Master  
(Upper)

	<p>EXPIRY DATE: TBC TO RECEIVE FUTURE NOTICES TO MARINERS BY <b>E-MAIL</b>, PLEASE REGISTER VIA OUR WEBSITE <a href="http://www.pla.co.uk">www.pla.co.uk</a> <b>Telephone calls, VHF radio traffic, CCTV and radar traffic images may be recorded in the VTS Centres at Gravesend and Woolwich</b> All Current Notices to Mariners can be found here - <a href="http://www.pla.co.uk/Safety/Regulations-and-Guidance/Notices-to-Mariners/Notices-to-Mariners">http://www.pla.co.uk/Safety/Regulations-and-Guidance/Notices-to-Mariners/Notices-to-Mariners</a></p>	
--	--	--