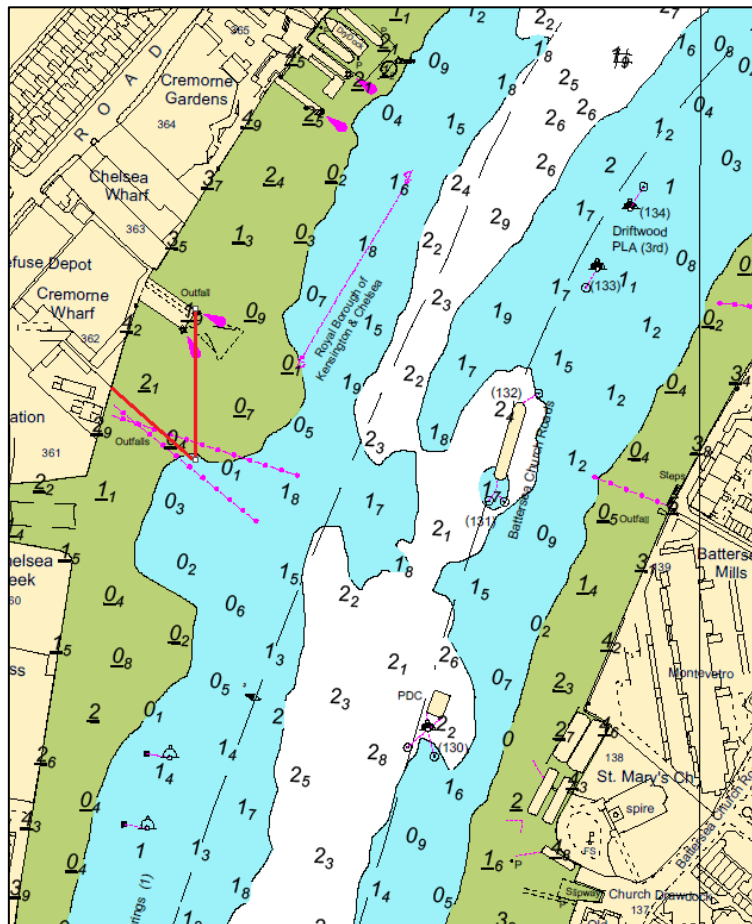


NOTICE TO MARINERS M29 of 2019

CHELSEA REACH CREMORNE WHARF WORKS AND OPERATIONS

On or about 20 May 2019 contractors working on the Tideway Tunnel Project will commence works at Cremorne Wharf.

Please see the chartlet below depicting the location of the works.



No vessels other than those engaged in the works or operations shall enter the navigation exclusion zone depicted by the red line on the chartlet.

The works which will include pile driving, bed levelling, and diving will take place using a variety of barges and craft and are expected to take approximately 1 month.

The vessels involved will maintain a listening watch on VHF channel 14. At times RY flags will be exhibited in conjunction with “proceed with caution / slow down requests” in VTS broadcasts.

On completion of the works Cremorne Wharf will become an operational berth with barge operations onto and off the wharf for approximately 30 months.

Vessels are requested to be mindful of the nature of the works and berth operations, be aware of vessels proceeding to and from the works, and their wash when passing, particularly at times of grounding and fleeting of the barges.

Further details will be broadcast by London VTS on VHF Channel 14.

8 May 2019

Port of London Authority
London River House, Royal Pier Road,
Gravesend, Kent DA12 2BG

BOB BAKER
CHIEF HARBOUR MASTER



EXPIRY DATE: 31st December 2022
TO RECEIVE FUTURE NOTICES TO MARINERS BY **E-MAIL**,
PLEASE REGISTER VIA OUR WEBSITE www.pla.co.uk
Telephone calls, VHF radio traffic, CCTV and radar traffic images may
be recorded in the VTS Centres at Gravesend and Woolwich
All Current Notices to Mariners can be found here -
<http://www.pla.co.uk/Safety/Regulations-and-Guidance/Notices-to-Mariners/Notices-to-Mariners>

