

NOTICE TO MARINERS M23 of 2019

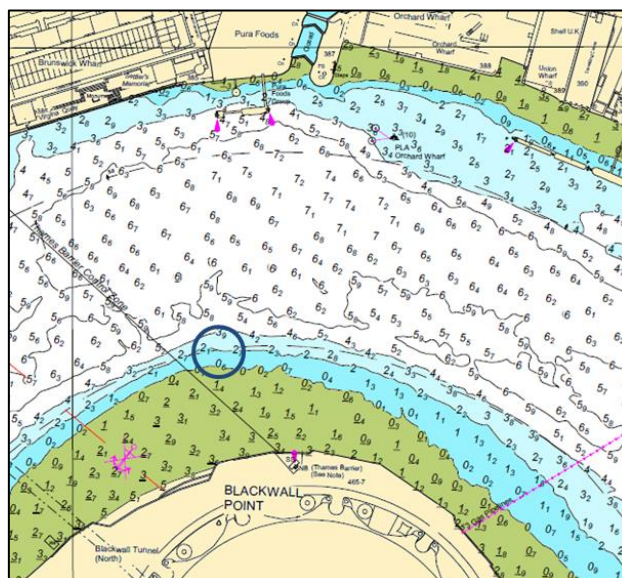
BUGSBY'S REACH BLACKWALL POINT SPECIAL MARK AND CONTROL MEASURES

Control measures will be put in place to facilitate the safe arrival, departure and berthing of ships over 200m LOA at Greenwich Ship Tier during the below dates:

Name	Arrival		Departure	
	Date	Time	Date	Time
Viking Sun	10 th May 19	05:15	12 th May 19	19:00
Seabourn Ovation	26 th May 19	06:30	27 th May 19	19:00
Viking Jupiter	28 th June 19	22:15	1 st July 19	23:59
Viking Sun	5 th July 19	03:30	7 th July 19	17:00
Viking Jupiter	27 th July 19	08:45	29 th July 19	23:15
Viking Sea	31 st July 19	00:45	1 st August 19	01:15
Viking Sun	2 nd August 19	02:30	4 th August 19	16:00
Viking Sun	30 th August 19	13:45	1 st September 19	14:45
Silver Spirit	7 th September 19	19:30	9 th September 19	09:30
Europa 2	1 st October 19	15:30	3 rd October 19	17:00

Temporary Special Mark

A temporary lit yellow special mark (Fl.Y.2) will be placed on the southern limits of the navigational channel at Blackwall Point. The special mark will be placed prior to each arrival and removed after each departure. Please see the attached chartlet.



Navigation Safety Zone

A navigation safety zone will be established around each ship. The safety zone will extend 750 metres ahead to 250 metres astern of the ship between Margaretness and Greenwich Ship Tier. The Harbour Service Launch which will be undertaking Local Traffic Control of navigation supported by London VTS.

All vessels navigating in the vicinity of these ships are to pay particular attention to these movements and maintain a continuous watch on VHF Channel 14, following instructions from the attendant Harbour Service Launches displaying blue flashing lights; call sign prefix 'THAMES PATROL'.

Further details will be broadcast by **London VTS on VHF Channel 14.**

25 April 2019

Port of London Authority
London River House, Royal Pier Road,
Gravesend, Kent DA12 2BG

BOB BAKER
CHIEF HARBOUR MASTER



EXPIRY DATE: 7th October 2019
TO RECEIVE FUTURE NOTICES TO MARINERS BY **E-MAIL**,
PLEASE REGISTER VIA OUR WEBSITE www.pla.co.uk
**Telephone calls, VHF radio traffic, CCTV and radar traffic images may
be recorded in the VTS Centres at Gravesend and Woolwich**
All Current Notices to Mariners can be found here -
<http://www.pla.co.uk/Safety/Regulations-and-Guidance/Notices-to-Mariners/Notices-to-Mariners>

