

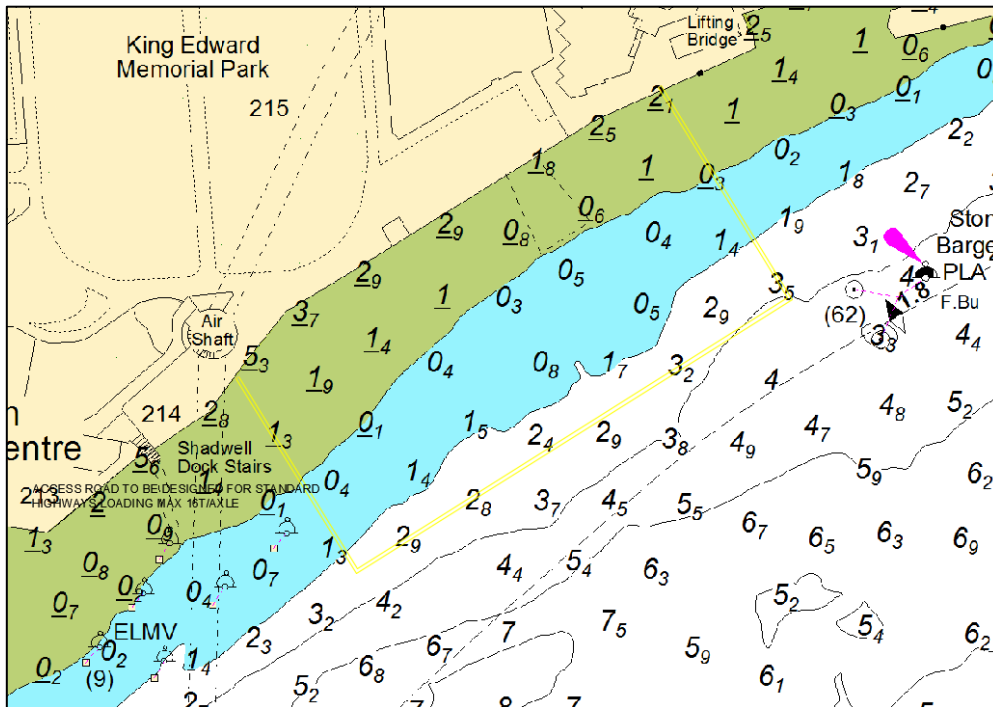
## NOTICE TO MARINERS M15 of 2018

### LOWER POOL KING EDWARD MEMORIAL PARK CONSTRUCTION

This notice replaces Notice to Mariners M40 of 2017 which is hereby cancelled.

Mariners are advised that contractors working on the Tideway Tunnel Project will continue their works which will involve constructing a twin cofferdam wall at King Edward Memorial Park. These are not now expected to be completed until the end of December 2018.

Please see the chartlet below depicting the location of the works.



The works which will include dredging, diving, piling and back filling operations will take place using a variety of barges including crane barges, tugs and Multicat vessels. The vessels involved will maintain a continuous listening watch on VHF channel 14. At times RY flags may be exhibited in conjunction with “proceed with caution / slow down requests” in VTS broadcasts.

No vessels other than those engaged in the works shall enter the construction area depicted by the yellow line on the chartlet.

Vessels are requested to be mindful of the nature of the works, their wash when passing the works and to pass at a safe distance.

Further details will be broadcast by London VTS on VHF Channel 14.

---

**15 February 2018**

Port of London Authority  
London River House, Royal Pier Road,  
Gravesend, Kent DA12 2BG

**BOB BAKER**  
**CHIEF HARBOUR MASTER**



**EXPIRY DATE: 31<sup>st</sup> December 2018**  
TO RECEIVE FUTURE NOTICES TO MARINERS BY **E-MAIL**,  
PLEASE REGISTER VIA OUR WEBSITE [www.pla.co.uk](http://www.pla.co.uk)  
**Telephone calls, VHF radio traffic, CCTV and radar traffic images may  
be recorded in the VTS Centres at Gravesend and Woolwich**

