

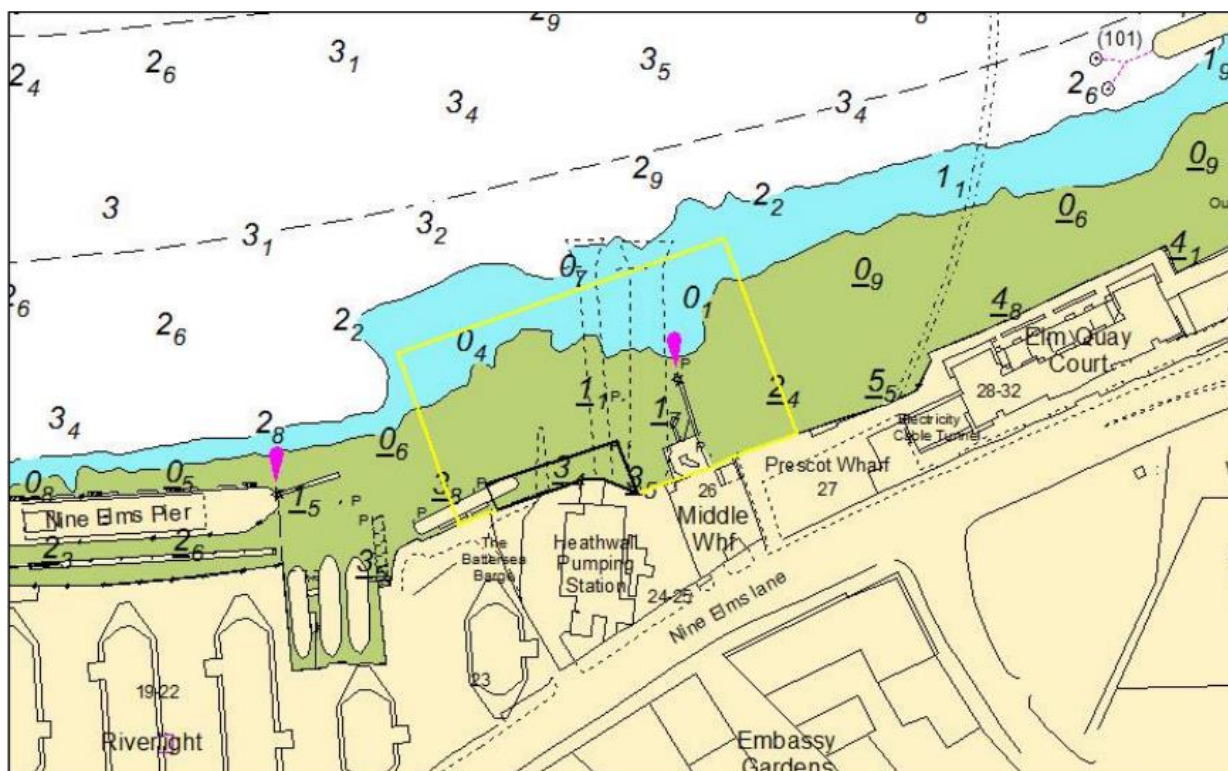
## NOTICE TO MARINERS      M12 of 2019

### NINE ELMS REACH HEATHWALL PUMPING STATION CONSTRUCTION WORKS

This notice supersedes M32 of 2018 which is hereby cancelled.

Mariners are advised that contractors working on the Tideway Tunnel Project will continue their works which will involve river bed preparation works, muck away and backfill operations, mooring piles installation and continuing constructing a cofferdam wall that includes a new shaft and chamber at Heathwall Pumping Station just down river of Nine Elms Pier.

Please see the chartlet below depicting the location of the construction works and the cofferdam as completed.



No vessels other than those engaged in the works shall enter the navigation exclusion zone depicted by the yellow line on the chartlet.

The works which will include dredging, diving, sheet piling and back filling operations will take place using a variety of barges including crane barges, jack up barges, supply barges, tugs, work boats and multicat vessels and are expected to take approximately 10 months.

The vessels involved will maintain a listening watch on VHF channel 14. At times RY flags will be exhibited in conjunction with “proceed with caution / slow down requests” in VTS broadcasts.

Vessels are requested to be mindful of the nature of the works, be aware of vessels proceeding to and from the works, their wash when passing the works, and to pass at a safe distance particularly from any yellow pellet buoys which may be marking anchors, sinkers or other under water obstructions.

Further details will be broadcast by London VTS on VHF Channel 14.

---

**25 February 2019**

Port of London Authority  
London River House, Royal Pier Road,  
Gravesend, Kent DA12 2BG

**BOB BAKER**  
**CHIEF HARBOUR MASTER**



EXPIRY DATE: 31<sup>st</sup> December 2019  
TO RECEIVE FUTURE NOTICES TO MARINERS BY **E-MAIL**,  
PLEASE REGISTER VIA OUR WEBSITE [www.pla.co.uk](http://www.pla.co.uk)  
**Telephone calls, VHF radio traffic, CCTV and radar traffic images may  
be recorded in the VTS Centres at Gravesend and Woolwich**  
**All Current Notices to Mariners can be found here -**  
**<http://www.pla.co.uk/Safety/Regulations-and-Guidance/Notices-to-Mariners/Notices-to-Mariners>**

