

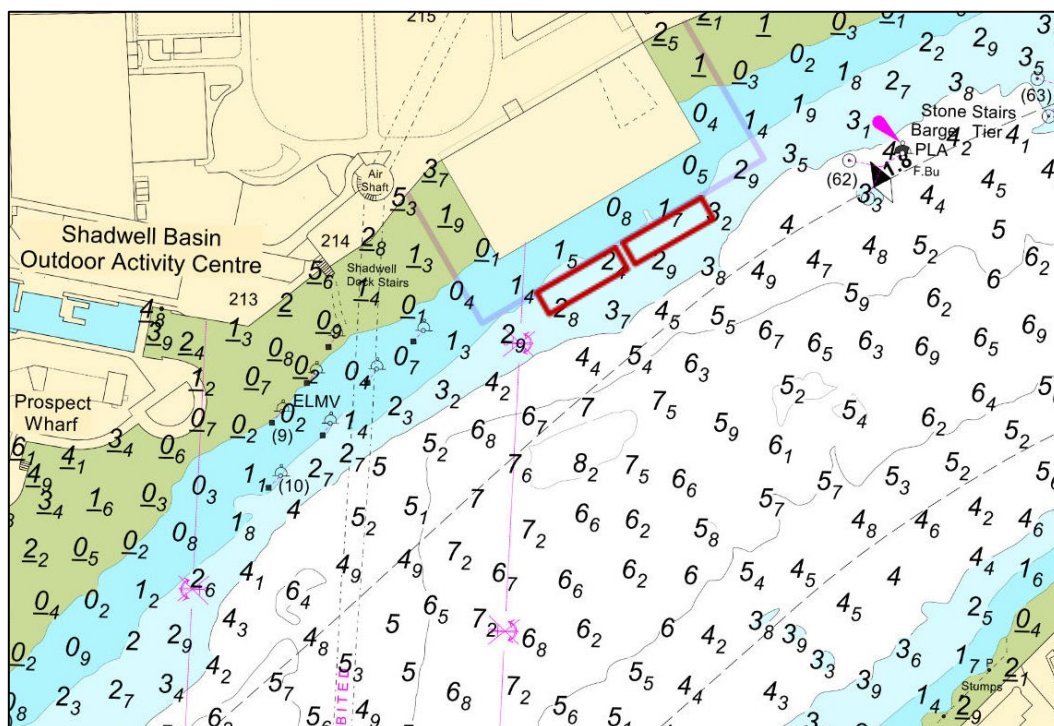
# LOWER POOL KING EDWARD MEMORIAL PARK CONSTRUCTION WORKS

*This notice replaces M54-23 which is hereby cancelled.*

Table of Amendments	
10/01/2024	Amendment to diving operations on page 2

Mariners are advised of the continuing Tideway Tunnel Project temporary cofferdam deconstruction works at King Edward Memorial Park, near Shadwell Basin, including mobilisation of a crane barge on **15<sup>th</sup> January 2024**. Works will take approximately 7 months.

At times a 500t barge may be moored outside the works area marked on the chart. The chartlet below shows the maximum extent at which this barge may be moored (in red). In addition, project barges will be using the Stone Stairs Barge Tier, which is leased for the duration of these works.



**10/01/2024**

Port of London Authority  
London River House, Royal Pier Road,  
Gravesend, Kent DA12 2BG

**LYN KINDLEN-FUNNELL**  
Harbour Master

**EXPIRY DATE: 05/07/2024**

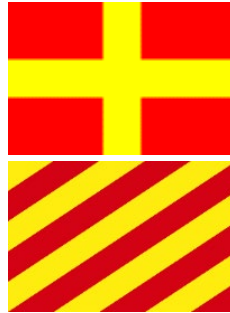
TO RECEIVE FUTURE NOTICES TO MARINERS BY E-MAIL,  
PLEASE REGISTER VIA OUR WEBSITE [pla.co.uk/Subscription-to-Newsletter](http://pla.co.uk/Subscription-to-Newsletter)

Telephone calls, VHF radio traffic, CCTV and radar traffic images may be recorded in the  
VTS Centres at Gravesend and Woolwich



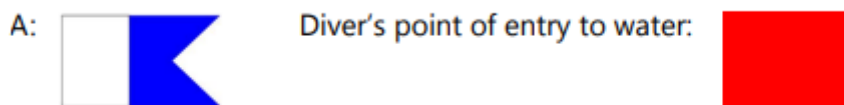
Works involve excavation, pile removal, dredging, diving and laying of scour protection using a variety of crane barges, jack up barges, supply barges, dredgers, tugs, work boats and multicat vessels. The vessels will maintain a listening watch on VHF channel 14.

At times, requests for vessels to proceed with caution or pass at slow speed will be made by London VTS on VHF ch.14, in accordance with the Port of London Authority's [Port Information Guide](#), under 'London VTS', section 4. International Code Flags 'Romeo Yankee (RY)' will be displayed accordingly.



Vessels are requested to be mindful of the nature of the works, to be aware of vessels proceeding to and from the works, and of their wash when passing, particularly during crane lifting operations.

In addition, if diving operations are underway, International Code Flag 'Alpha (A)' and a red flag in accordance with Byelaw 33 will be displayed as appropriate:



Further details will be broadcast by **London VTS** on **VHF Channel 14**.



PLA Port Information Guide

**EXPIRY DATE:**  
**05/07/2024**

Port of London Authority  
London River House, Royal Pier Road,  
Gravesend, Kent DA12 2BG

**LYN KINDLEN-FUNNELL**  
**Harbour Master**