

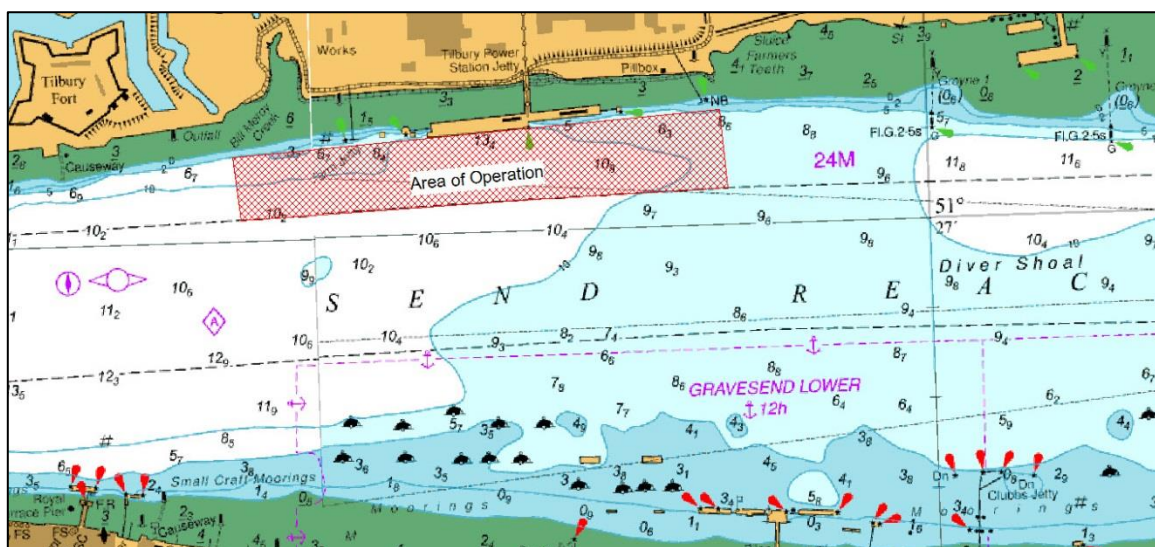
## NOTICE TO MARINERS      L28 of 2019

### GRAVESEND REACH

### TILBURY2

### MARINE WORKS

This notice supersedes L26 of 2019



Work continues on the development of two new RoRo berths and a CMAT berth on the former Tilbury Power Station Jetty site.

The following works are currently underway:

- Creation of 8 new berthing dolphins on the downriver end of the former Tilbury Power Station Jetty which will form the new CMAT terminal. Works consist of piling from marine plant.
- Creation of 7 new berthing dolphins upriver of the former power station jetty to create a new RoRo berth. Works consist of piling from marine plant.
- Removal of Marsh Farm Jetty and upriver mooring dolphin to allow the creation of the new RoRo berths with associated pontoon and link span. The work will be carried out by the jack-up barge HAVEN SEARIDER or similar jack-up barge.

The following works are expected to commence shortly:

- The new berthing dolphins will be capped with concrete tops that will be towed to site, from Tilbury Dock, and lifted into position. This work is expected to commence w/c 22<sup>nd</sup> July 2019.

**GENERAL INFORMATION**

Marine Plant involved in these operations includes the 75m flat top barge NEPTUNE equipped with a 320T crawler crane and two transfer & storage barges. All barge movements will be carried out by either the multi-cat vessel SEADOG or SHAKEDOG, with the safety boat EOL1 in attendance.

Throughout the works periods there will be a requirement for vessels to ‘Proceed with Caution’ with this being broadcast by London VTS on VHF Channel 68 in conjunction with marine craft displaying International Code flags “Romeo Yankee”.

At times the jetty lights will not be displayed as per published nautical charts while the various constructions works are carried out. At all times the eastern and western limits will be marked by green aids to navigation. Isolated structures will be marked individually. Charts will be updated on completion of the works.

All vessels involved with the works will maintain a continuous listening watch on VHF Channel 68.

For the latest information contact London VTS on VHF Channel 68 or by telephone on 01474 560311.

---

**22 July 2019**

Port of London Authority  
London River House, Royal Pier Road,  
Gravesend, Kent DA12 2BG

**BOB BAKER**  
**CHIEF HARBOUR MASTER**



TO RECEIVE FUTURE NOTICES TO MARINERS BY **E-MAIL**,  
PLEASE REGISTER VIA OUR WEBSITE [www.pla.co.uk](http://www.pla.co.uk)  
**Telephone calls, VHF radio traffic, CCTV and radar traffic images may  
be recorded in the VTS Centres at Gravesend and Woolwich**  
All Current Notices to Mariners can be found here -  
<http://www.pla.co.uk/Safety/Regulations-and-Guidance/Notices-to-Mariners/Notices-to-Mariners>

