

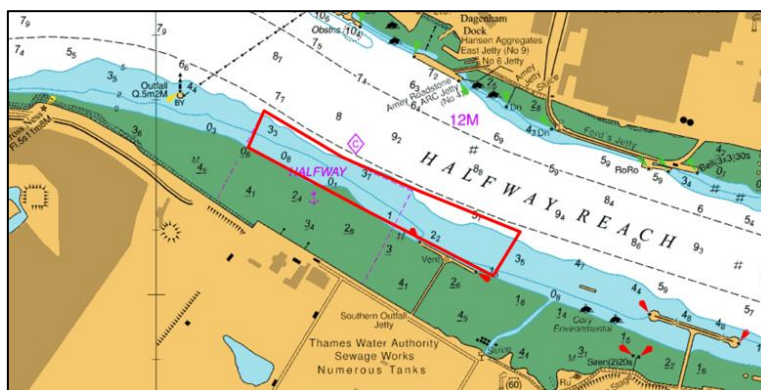
## NOTICE TO MARINERS      L21 of 2019

### HALFWAY REACH

### FISHERIES RESEARCH

### HALFWAY ANCHORAGE & SOUTHERN OUTFALL JETTY

In June, August and October 2019 the 'Zoological Society London' will be carrying out fisheries research in conjunction with the Environment Agency to update statistics gathered in previous surveys in 1987 and 2011.



The research will be carried out by deploying three FYKE nets in the vicinity of the Southern Outfall Jetty and Halfway Anchorage. The nets will be deployed subject to tidal conditions for approximately 24 hours at a time within the following dates:

- 3rd June – 14th June
- 19th August – 30th August
- 14th October – 25th October

London VTS will broadcast when the nets have been deployed as anchoring in Halfway Anchorage will not be possible at these times. The nets will not impede the main navigational channel.

The nets will sit on the river bed with a height of approximately 50cm and marked with temporary buoys to indicate their position. The nets will be anchored in position to align with the tidal flow at a length of up to 75m.

The Environment Agency's boat ROKER (a 6m aluminium, rigid buoyance workboat) will be in attendance at times to deploy and recover the nets. ROKER will be listening on VHF Channel 14 throughout their operations.

For the latest information contact London VTS on VHF Channel 68 or by telephone on 01474 560311

---

**29 May 2019**

Port of London Authority  
London River House, Royal Pier Road,  
Gravesend, Kent DA12 2BG

**BOB BAKER**  
**CHIEF HARBOUR MASTER**



EXPIRY DATE: 31<sup>st</sup> October 2019  
TO RECEIVE FUTURE NOTICES TO MARINERS BY **E-MAIL**,  
PLEASE REGISTER VIA OUR WEBSITE [www.pla.co.uk](http://www.pla.co.uk)  
Telephone calls, VHF radio traffic, CCTV and radar traffic images may  
be recorded in the VTS Centres at Gravesend and Woolwich  
All Current Notices to Mariners can be found here -  
<http://www.pla.co.uk/Safety/Regulations-and-Guidance/Notices-to-Mariners/Notices-to-Mariners>

