

NOTICE TO MARINERS L12 of 2019

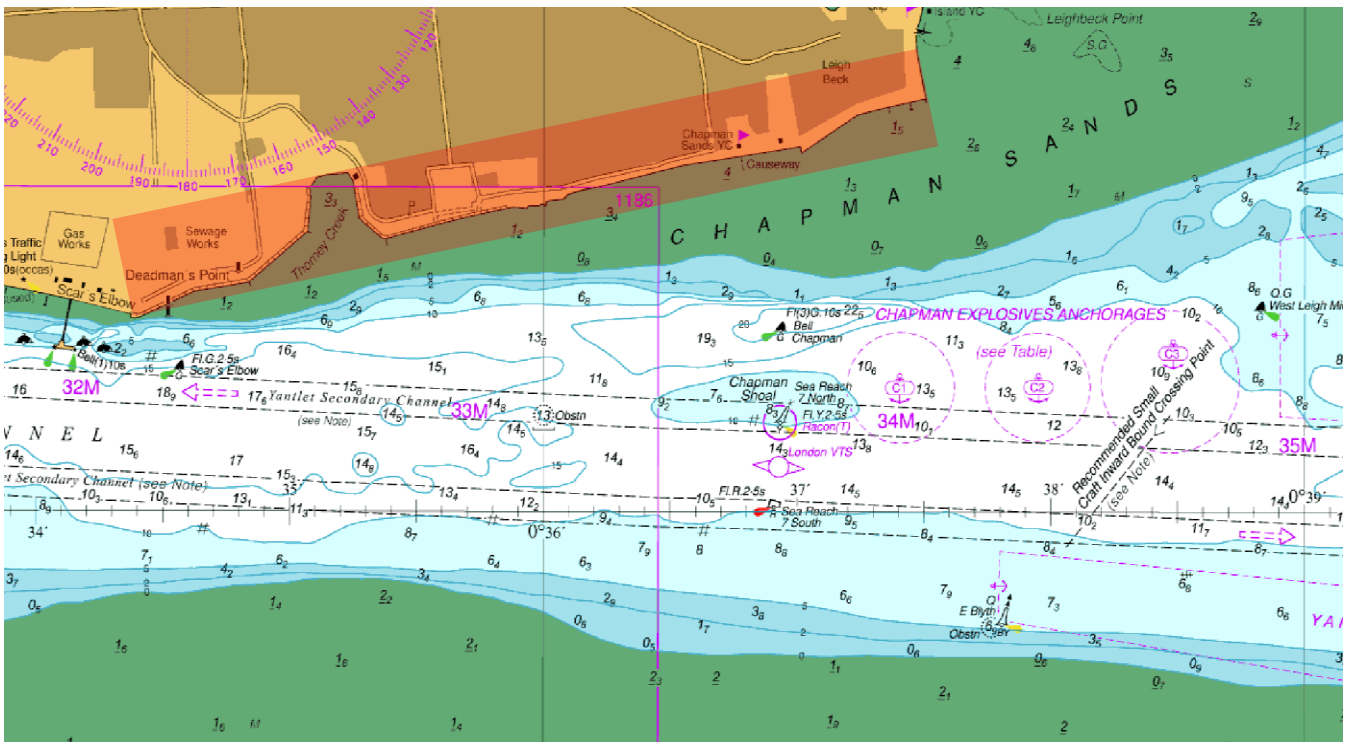
CANVEY ISLAND

WASH AND DRAW-OFF DANGERS ON PUBLIC BEACHES

The foreshore and river wall on Canvey Island between the Chapman Anchorages and Scar's Elbow is a popular public beach and amenity. For members of the public using the beaches and the river wall there are potentially serious implications from the dangers of wash and draw-off from passing vessels.

Consequently, all vessels are requested to be mindful of the effects of wash and draw-off in this area, especially over the high water periods during daylight hours. Masters are reminded of the requirement under Port of London Thames Byelaw 57 that any wash or draw-off created by their vessel must not compromise the safety of others using the Thames and the foreshore.

Additionally, users of personal watercraft (e.g. "jetskis") are advised that they must not operate at speeds in excess of eight knots within 200 metres of a public beach, and that the launch or recovery of a personal watercraft from an unauthorised location (such as Thorney Bay Beach) is prohibited under Port of London Thames Byelaw 14.



3 April 2019

Port of London Authority
London River House, Royal Pier Road,
Gravesend, Kent DA12 2BG

BOB BAKER
CHIEF HARBOUR MASTER



EXPIRY DATE: 31st October 2019
TO RECEIVE FUTURE NOTICES TO MARINERS BY E-MAIL,
PLEASE REGISTER VIA OUR WEBSITE www.pla.co.uk
Telephone calls, VHF radio traffic, CCTV and radar traffic images may
be recorded in the VTS Centres at Gravesend and Woolwich
All Current Notices to Mariners can be found here -
<http://www.pla.co.uk/Safety/Regulations-and-Guidance/Notices-to-Mariners/Notices-to-Mariners>

