

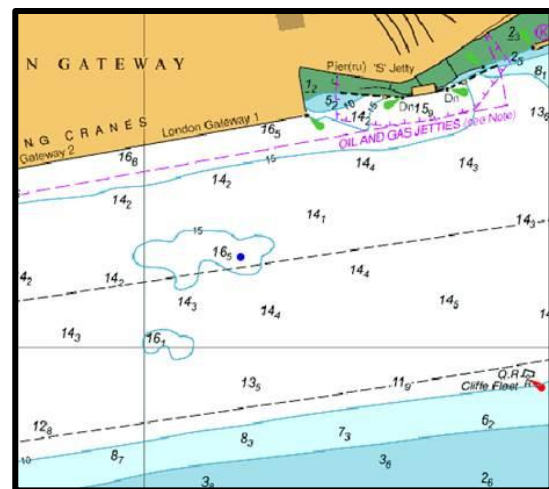
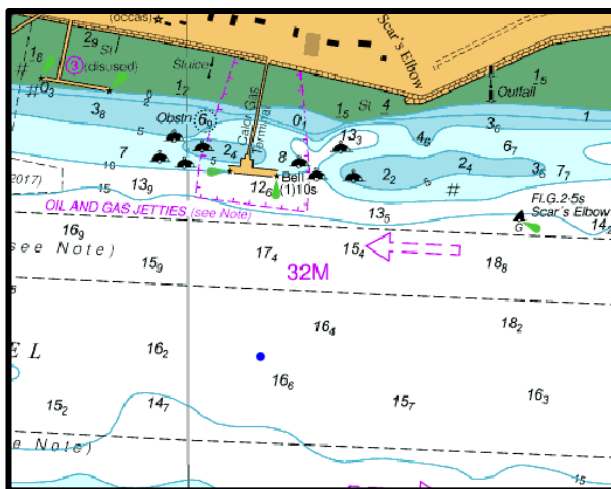
NOTICE TO MARINERS L12 of 2018

SEA REACH

CALOR & LONDON GATEWAY

TIDE MONITORING EQUIPMENT

Mariners are advised that during the last week of July 2018 the PLA Hydrographic Service will be deploying a bottom-mounted current monitoring device (an ADCP) mid channel off Calor Canvey.



The deployment will last about two weeks after which it will be moved to the approaches to London Gateway 1 for a further two week deployment.

The unit stands less than one metre above the bed and the sites have been selected so as to not interfere with any surface shipping, which will not be restricted during these deployments. There will be no surface markers.

Deployment and recovery will be made over LW slack periods by PLA SV Maplin, who will liaise with PCC London and local shipping during the operations, which will last approximately 30 minutes.

For the latest information contact London VTS on VHF Channel 68 or by telephone on 01474 560311.

19th July 2018

Port of London Authority
London River House, Royal Pier Road,
Gravesend, Kent DA12 2BG

BOB BAKER
CHIEF HARBOUR MASTER



TO RECEIVE FUTURE NOTICES TO MARINERS BY **E-MAIL**,
PLEASE REGISTER VIA OUR WEBSITE www.pla.co.uk
Telephone calls, VHF radio traffic, CCTV and radar traffic images may
be recorded in the VTS Centres at Gravesend and Woolwich



PORT OF LONDON
AUTHORITY